



Fire Your Imagination

Studio Slimline

Balanced Flue - Stone Chippings and Log

with Thermostatic Remote Control



IMPORTANT:
FOR EASY TO FOLLOW,
STEP BY STEP VIDEO
INSTRUCTIONS ON HOW TO
OPERATE AND MAINTAIN YOUR
GAZCO REMOTE SYSTEM GO TO
WWW.GAZCO.TV

Instructions for Use, Installation & Servicing

For use in GB & IE (Great Britain & Republic of Ireland).

IMPORTANT

THE OUTER CASING, FRONT AND GLASS PANEL BECOME EXTREMELY HOT DURING OPERATION AND WILL RESULT IN SERIOUS INJURY AND BURNS IF TOUCHED. IT IS THEREFORE RECOMMENDED THAT A FIREGUARD COMPLYING WITH BS 8423:2002 IS USED IN THE PRESENCE OF YOUNG CHILDREN, THE ELDERLY OR INFIRM.

This product contains a heat resistant glass panel. This panel should be checked during Installation and at each servicing interval. If any damage is observed on the front face of the glass panel (scratches, scores, cracks or other surface defects), the glass panel must be replaced and the appliance must not be used until a replacement is installed. Under no circumstances should the appliance be used if any damage is observed, the glass panel is removed or broken.

These Instructions must be left with the appliance for future reference and for consultation when servicing the appliance. Please make the customer aware of the correct operation of the appliance before leaving these instructions with them.

The commissioning sheet found on Page 3 of this Instruction manual must be completed by the Installer prior to leaving the premises.

Contents

Studio Slimline Balanced Flue

Covering the following models:

	Nat Gas	LPG
Log Effect	123-191	123-489
White Stone Effect	123-238	123-642

Appliance Commissioning Checklist3

User Instructions.....4

Installation Instructions14

Technical Specifications - Stone Chippings Version 14

Site Requirements..... 17

Installation20

Commissioning.....36

Servicing Instructions.....37

Fault Finding.....37

How To Replace Parts.....40

Basic Spare Parts List - Stone Chippings.....46

Service Records47



To receive your Extended Warranty your Gazco appliance must have been purchased from our Expert Retailer Network and registered within one month of purchase or installation. Please note that all warranties are effective from the date of purchase. Any Gazco product purchased outside of our Extended Retailer Network, or not registered within the stated time will carry a standard 12 month warranty.

It is a condition of the Extended Warranty that the installation complies with the relevant Building Regulations and is carried out by a suitably trained and qualified individual (GasSafe in the UK or equivalent in other countries) with the certificate of installation and the Commissioning Report on Page 3 completed and retained by the end user.

Full terms and conditions are detailed in the Warranty Statement on the Gazco website www.gazco.com. In the event of any conflict of information the wording on the website shall prevail.

Important Note: Should any problems be experienced with your product, claims must first be submitted to the Expert Retailer where the appliance was purchased from who will offer immediate assistance or contact Gazco on your behalf.

Appliance Commissioning Checklist

To assist us in any guarantee claim please complete the following information:-

IMPORTANT NOTICE

Explain the operation of the appliance to the end user, hand the completed instructions to them for safe keeping, as the information will be required when making any guaranteed claims.

FLUE CHECK	PASS	FAIL
1. Flue Is correct for appliance		
2. Flue flow Test N/A		
3. Spillage Test n/a		
GAS CHECK		
1. Gas soundness & let by test		
2. Standing gas pressure	mb	
3. Appliance working pressure (on High Setting NB All other gas appliances must be operating on full	mb	
4. Gas rate	m ³ /h	
5. Does Ventilation meet appliance requirements N/A		

RETAILER AND INSTALLER INFORMATION

Retailer Contact No. Date of Purchase Model No. Serial No. Gas Type	Installation Company Engineer Contact No. Gas Safe Reg No. Date of Installation
--	--

User Instructions

Welcome

Congratulations on purchasing your Studio fire, if installed correctly Gazco hope it will give you many years of warmth and pleasure for which it was designed.

The purpose of this manual is to familiarise you with your appliance, and give guidelines for its installation, operation and maintenance. If, after reading, you need further information, please do not hesitate to contact your Gazco retailer.

WARNING



In the event of a gas escape or if you can smell gas, please take the following steps:

- **Immediately turn off the gas supply at the meter/emergency control valve**
- **Extinguish all sources of ignition**
- **Do not smoke**
- **Do not operate any electrical light or power switches (On or Off)**
- **Ventilate the building(s) by opening doors and windows**
- **Ensure access to the premises can be made**

Please report the incident immediately to the National Gas Emergency Service Call Centre on 0800 111 999 (England, Scotland and Wales) , 0800 002 001 (N. Ireland) or in the case of LPG, the gas supplier whose details can be found on the bulk storage vessel or cylinder.

The gas supply must not be used until remedial action has been taken to correct the defect and the installation has been recommissioned by a competent person.

1. General

- 1.1 Installation and servicing must only be carried out by a competent person whose name appears on the Gas Safe register. To ensure the engineer is registered with Gas Safe they should possess an ID Card carrying the following logo:



- 1.2 In all correspondence, please quote the appliance type and serial number, which can be found on the data badge located on a plate attached to the lower slotted trim.
- 1.3 **Do not** place curtains above the appliance: You must have 300mm (1') clearance between the appliance and any curtains at either side.

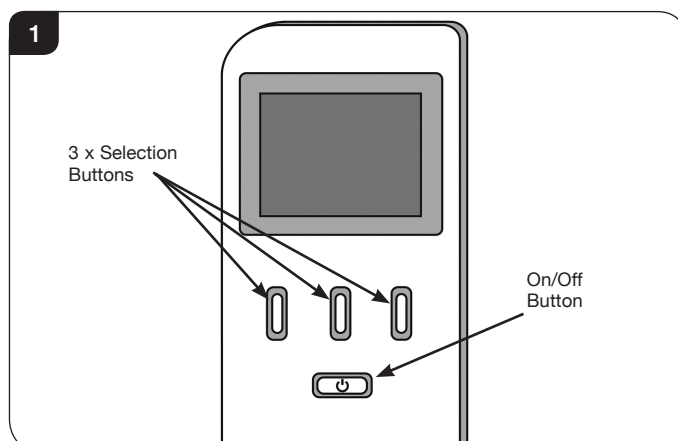
- 1.4 No furnishings or other objects should be placed within 1 metre of the front of the appliance.
- 1.5 If a shelf is fitted, a distance of 400mm above the appliance is required.
- 1.6 If any cracks appear in the glass panel do not use the appliance until the panel has been replaced.
- 1.7 Do not obstruct the flue terminal in any way, i.e. by planting flowers, trees, shrubs etc. in the near vicinity, or by leaning objects against the terminal guard.
- 1.8 Do not put any objects on the terminal guard; it will lose its shape.
- 1.9 If you use a garden sprinkler, do not let quantities of water into the flue terminal.
- 1.10 In the unlikely event the appliance is receiving interference from other electronic devices, the handset/Control box can be reprogrammed. Please refer to the commissioning section in order to change the communication channel.
- 1.11 This product is guaranteed for 5 years from the date of installation, as set out in the terms and conditions of sale between Gazco and your local Gazco retailer. Please consult with your local Gazco retailer if you have any questions. In all correspondence always quote the Model Number and Serial Number.



IMPORTANT : NEVER position an LCD/Plasma TV above this appliance.

2. Control Options

- 2.1 The appliance has 4 flame settings:
1. High.
 2. Medium.
 3. Low.
 4. Standby (Pilot only).
- 2.2 Both touch pad and handset allow you to manually switch between flame settings.
- 2.3 The Thermostatic handset also allows to set the appliance to automatically regulate the room temperature.

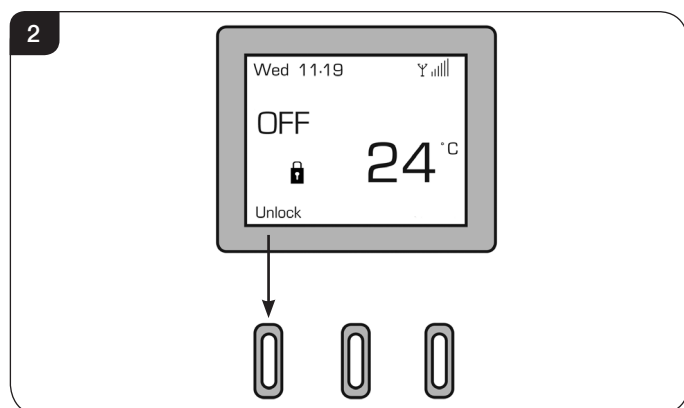


User Instructions

Before using the remote control:

- 2.4 If there is no display on the LCD screen press any key.
- 2.5 When first powered, the handset displays the OFF screen. The handset may be locked as indicated by the padlock symbol (🔒), see Diagram 2.

NOTE: To select a function from the options displayed at the bottom of the screen press the button directly below the desired function.



- 2.6 To unlock the handset select Unlock followed by OK - the symbol will change to an open padlock (🔓).
- 2.7 There are 3 different modes available for controlling and operating the appliance:
 1. Manual Mode - See Page 6.
 2. Automatic Mode - See Page 6.
 3. Program Mode - See Page 7.

When a command from the handset is received a beep will sound and the LED on the handset will briefly illuminate.

NOTE: The LED flashes every 4 seconds to show that it is communicating with the appliance. After each command has been accepted the LED will cease flashing until the command has been carried out. Wait until the LED resumes flashing before giving another command.

Advanced Controls

- 2.8 The thermostatic remote control handset has been pre-set as follows:
 - a) Thermostat mode - the appliance will alter automatically to achieve and maintain a desired room temperature in Auto (Fixed Temp) or Program mode.
 - b) Gap temperature set at 2°C - in Auto or Program mode the appliance will automatically ignite if the room temperature falls 2°C below the fixed temperature.
 - c) Program mode enabled - this allows one of three temperatures (Night temperature, Comfort temperature or Off) to be set for each hour of the day on a daily or weekly cycle.

d) Soft start enabled - in Auto or Program mode there is a 10 second delay between flame settings when more than one change of setting is required (i.e. from High to Low).

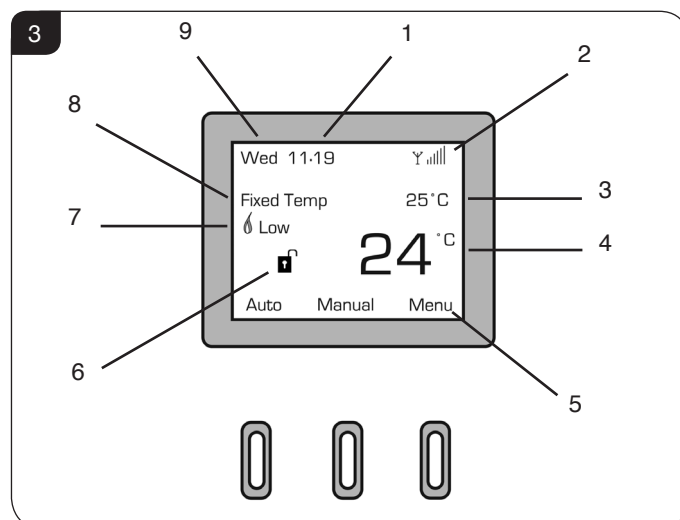
e) Sounder ON - the appliance will beep to confirm that it has received a command from the handset or touch pad.

f) Safety Temperature pre-set at 40°C - the appliance will automatically switch off if the room temperature (as displayed on the handset) exceeds 40°C.

NOTE: If the Safety Temperature is exceeded the appliance can not be turned on again until the room temperature has dropped below the safety temperature.

2.9 The LCD screen displays the following information, see Diagram 3.

- 1) Time (24 hr clock)
- 2) Signal strength (between handset and appliance)
- 3) Selected Setting - set fixed temperature (in degrees) when in Auto mode (small number)
- 4) Current room temperature (large number)
- 5) Button function
- 6) Child lock status (shown by open or closed padlock)
- 7) Current flame status (Low, Med, High)
- 8) Selected Mode - Manual Flame / Fixed Temp (Auto) / Program - when appliance is switched on
- 9) Day of the week (Mon - Sun)



1. Manual Mode

Switching the Appliance ON:

- 2.10 To light the appliance press the On/Off (🔌) button, this will bring up the LCD screen. Select the 'On' option on the left of the screen immediately followed directly by the OK button, a single beep will sound.

User Instructions

After the start up cycle has completed the appliance will light on the high flame setting (this can take up to 20 seconds).

Select the 'Manual' option on the screen to control the appliance.

Decreasing the Flame Height:

- 2.11 From the high flame setting press DOWN (↓) once to lower the flame to the medium setting.
- 2.12 From the medium flame setting press DOWN (↓) once to lower the flame to the low setting.
- 2.13 From the low flame setting press DOWN (↓) once to put the appliance in Standby mode (Pilot only).

Increasing the Flame Height:

- 2.14 To light the appliance when it is in Standby mode press UP (↑) once. The appliance will light on the **Low** flame setting.
- 2.15 From the low setting press UP (↑) once to increase the flame setting to medium.
- 2.16 From the medium setting press UP (↑) once to increase the flame setting to high.



WARNING: IF THE APPLIANCE FAILS TO LIGHT OR BECOMES EXTINGUISHED IN USE, WAIT 3 MINUTES BEFORE ATTEMPTING TO RELIGHT.



IMPORTANT: YELLOW FLAMES TYPICALLY APPEAR WHEN THE APPLIANCE HAS REACHED NORMAL OPERATING TEMPERATURE. THIS CAN TAKE UP TO 30 MINUTES.

Switching the Appliance OFF:

- 2.17 To switch the appliance OFF press the On/Off (⏻) button once, see Diagram 1.

2. Automatic Mode

Auto mode allows you to pre-set a room temperature. The appliance controls the flame setting automatically to achieve and maintain this temperature.

NOTE: WHEN IN AUTOMATIC MODE, THE PILOT REMAINS LIT AND THE MAIN BURNER AUTOMATICALLY ADJUSTS TO MAINTAIN THE FIXED TEMPERATURE WHETHER OR NOT ANYONE IS IN THE ROOM.

- 2.18 If the appliance is switched off, select On followed by OK. The appliance will emit a single beep and the pilot will light.
- 2.19 Select Auto. The screen will display the word 'Thermo' and the current fixed room temperature will be highlighted.
- 2.20 Use the buttons directly below the up (↑) or down (↓) symbols to select a temperature between 0°C and 37°C.

The flame setting required to achieve the desired room temperature will now be displayed below the word 'Thermo'.

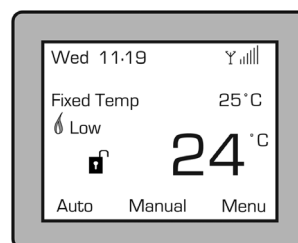
- 2.21 The appliance will maintain the fixed temperature by automatically adjusting the flame height as follows:

- a) If the room temperature falls 1°C below the fixed temperature the flame height will increase.
- b) If the room temperature rises 1°C above the fixed temperature the flame height will decrease.
- c) There will be a delay of 10 seconds between each flame setting adjustment.

- 2.22 Once the desired room temperature has been set, select Back to return to the main screen.

- 2.23 The screen will now display the words 'Fixed Temp', the chosen fixed temperature (e.g. 25°C) and the current room temperature (e.g. 24°C), see Diagram 4.

4



- 2.24 To change the fixed temperature at any time select Auto and follow 2.20.
- 2.25 To exit the Auto mode at any time select Manual and follow Section 2.22.
- 2.26 To turn off the appliance press the ON/OFF button once, see Diagram 2.

Setting the Display

Items displayed on the main screen, such as day and time, can be set using the Adjust Menu function.

- 2.27 To access the Adjust Menu function select Menu from the main screen.
- 2.28 Select Adjust Menu. In this menu it is possible to set the:

Temperature Unit (°C/°F)
Language
Autolock (On/Off)
Day (Mon - Sun)
Hour (24hr clock)
Minute
Comfort temperature (for use when in Program mode)
Night temperature (for use when in Program mode)

Access can be gained to the programmable functions via the Change Prog option (see Programming the Appliance).

Setting the Day and Time:

- 2.29 Use (↓) to scroll down to Day and press Select. Use (↑) and (↓) to set the day of the week.

User Instructions

- 2.30 Press Back and scroll down to Hour and select it. Use (↑) and (↓) to set the hour.
- 2.31 Press Back and scroll down to Minute and press Select. Use (↑) and (↓) to set the minutes.
- 2.32 The same process can be used to set any of the functions within this menu.

3. Program Mode

Program mode allows the appliance to be pre-set to a choice of temperature options on a daily or weekly cycle. The appliance will automatically switch on and off and control the flame setting to maintain pre-set hourly temperatures during each 24hr period.

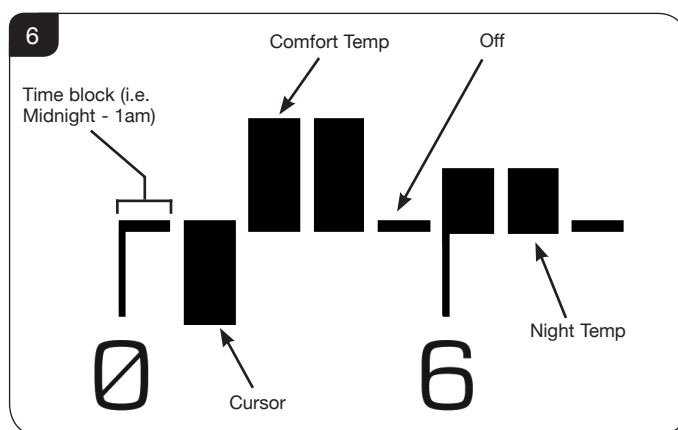
NOTE: WHEN IN PROGRAM MODE, THE PILOT REMAINS LIT AND THE MAIN BURNER AUTOMATICALLY SWITCHES ON AT THE PROGRAMMED TIMES AND ADJUSTS THE FLAME HEIGHT TO BRING THE ROOM TO THE SET TEMPERATURE WHETHER OR NOT ANYONE IS IN THE ROOM.

Note: The current day and time must be set in order for the programmable functions to work. (See Section 2.28 for details).

- 2.33 There are two types of program mode:
1. Daily - the temperature can be set for each hour over a 24hr period - This pattern is then repeated every day.
 2. Weekly - the temperature can be set for each hour over a 24hr period for each individual day of the week (Mon - Sun). This pattern is then repeated every week.
- 2.34 One of 3 options can be chosen for each hour across a 24 hour period:
- Off - the appliance will remain in Standby mode (pilot only). **The appliance will not switch off completely when in Program mode.**
 - Night Temp - the appliance will automatically maintain a pre-set night temperature.
 - Comfort Temp - the appliance will automatically maintain a pre-set comfort temperature.
- 2.35 To set the Comfort and Night temperature select Menu. In the next screen select Adjust Menu. Using (↓) scroll to Comfort Temperature and select. Use (↑) and (↓) to set a chosen temperature. Repeat for Night Temperature.
- 2.36 To access the programming screen select Menu. In the next screen select Adjust Menu. Using (↓) scroll to Change Prog and select. The programming screen will be displayed as shown in Diagram 5.

Setting Daily Operating Times:

- 2.37 In the program menu highlight the word 'Daily'. Press (↓) to access the 24 hour timer below 'Daily'. The arrow should now point to the right (→).
- 2.38 The timer reads 0 - 24 with both 0 and 24 representing midnight. Press (→) to scroll through the 24 hour timer. With the cursor resting on the chosen hour, press Change until the desired setting for that hour (Comfort Temperature, Night Temperature or Off) is reached. Use (→) to scroll to the next hour and select the desired function for each hour until all 24 hours are set, see Diagram 6.



- 2.39 The program must now be launched. To do to this see Section 2.44.

Setting Weekly Operating Times:

- 2.40 Access the programming screen as detailed in Section 2.36. The word 'Daily' will be highlighted. Select 'Change' to scroll from 'Daily' to the required day of the week (Monday - Sunday).
- 2.41 Press (↓) to access the timer. Select the function settings for each hour of the chosen day as detailed in 2.40. Repeat for the rest of the week.
- 2.42 Once the programming is completed select Back to return to the main screen.
- 2.43 The program must now be launched. To do to this see 2.44.

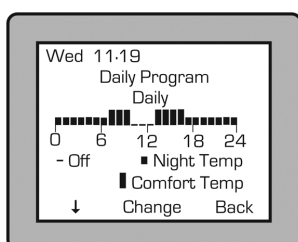
Launching a Daily or Weekly Program:

- 2.44 Select Menu. In the next screen use (↓) to scroll to Program and confirm. Select Change until the highlighted text reads ON.

Note: The appliance must be ON (pilot lit or any flame setting) in order to launch the program.

- 2.45 Select Back and use (↓) to select Prog Type. Select Change until the desired program (Daily or Weekly) is highlighted. Select Back twice to return to the main screen.

5



User Instructions

To Switch Off Program Mode

- 2.46 To switch off the set program select Stop from the options on the main screen. The appliance will switch to Stand-by (pilot only). Alternatively select Auto; this will end the program cycle and return to the main screen. The appliance will automatically adjust the flame height to maintain any previously set Fixed Temperature.


Locking the Handset

- 2.47 To lock the handset Select Lock. If the option is not visible on the screen (i.e. when the appliance is lit) select Menu and scroll down to Lock. Press Select and use the Change function to scroll to Yes. The handset is now locked.

3. Replacing the Handset Batteries

- 3.1 **BEFORE USE:**
Ensure the remote handset contains 2 x AA 1.5v alkaline batteries (provided). Always replace the batteries with high quality batteries (Duracell or similar).
DO NOT USE RECHARGEABLE BATTERIES.
- 3.2 Communication between the handset and the appliance may take up to 2 minutes after batteries have been replaced, check the strength of the signal in the top right hand corner of the LCD display (Y|||).
- 3.3 If communication is not regained after this time the control unit and the handset may need pairing. Please refer to Commissioning, Section 2, Pairing the Appliance.

4. Handset Troubleshooting



IMPORTANT - THE CONTROL SYSTEM HAS BEEN PROGRAMMED TO CHANNEL 'C'. SOME HOUSEHOLD APPLIANCES MAY HAVE ALSO BEEN SET TO OPERATE ON THE SAME FREQUENCY. ALTHOUGH THIS HAS NO EFFECT ON THE SAFETY OF THE SYSTEM AN EXCESSIVE DELAY MAY BE ENCOUNTERED BETWEEN COMMANDS. IF THIS OCCURS FOLLOW THE INSTRUCTIONS IN COMMISSIONING SECTION 3 TO CHANGE THE CHANNEL.

CHANNEL SETTINGS

- 4.1 The appliance has been factory set to only communicate with the handset it is supplied with. It will not respond to any other remote control, even one from an identical appliance.

A replacement handset will need to be paired with the appliance before use. Please refer to Commissioning, Section 2, Pairing the Appliance.

LOW BATTERY

- 4.2 If the batteries in the remote control handset become discharged the LCD display will show the message Low Battery.

Follow Section 3 - Replacing The Handset Batteries.

REMOTE SIGNAL STRENGTH

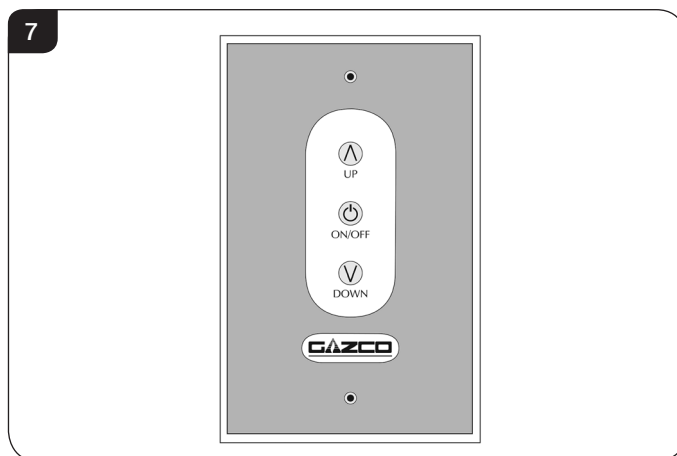
NOTE: If the handset is taken out of range the signal strength indicator will show 'Loss of Signal'. When the handset is returned to the appliance it will be necessary to press any button and wait for the signal indicator to recognise the handset. This can take up to 4 minutes

- 4.3 If the appliance does not respond to the handset, check the strength of the signal in the top right hand corner of the LCD display (Y|||).

No vertical bars next to the signal symbol (Y) means communication between the appliance and the handset has been lost. If the communication loss exceeds 18 minutes the appliance will emit 20 beeps and switch OFF. Try the following:

- 4.4 Move the handset closer to the appliance.
- 4.5 Replace the batteries in the handset, see Section 3.
- 4.6 If there is still no signal, operate the appliance using the touch pad control, see Section 5 and consult your installer or Gazco retailer.

5. Touch Pad Control



The touch pad control is located on the front of the wall switch and allows manual operation of the appliance, see Diagram 7.

With the touch pad it is possible to turn the appliance ON, OFF and control the flame setting.

NOTE: When using the touch pad buttons a beep will be emitted from the appliance to indicate an accepted command.

Lighting the appliance

- 5.1 Press the On/Off button once.

If the pilot fails to light, press the ON/OFF button to switch OFF. Wait for at least 30 seconds before attempting to relight.

- 5.2 After the start up cycle has completed the appliance will light on the **high flame setting** (this can take up to 20 seconds).

User Instructions

If the appliance is in Standby mode, pressing the UP (^) button will cause the main burner to ignite on the **Low** flame setting.

- 5.3 To increase the flame height press the UP (^) button.
- 5.4 To decrease the flame height press the DOWN (v) button.
- 5.5 When on the lowest flame setting pressing the Down (v) button will switch the appliance to Standby mode (pilot only).



WARNING: IF THE APPLIANCE FAILS TO LIGHT OR BECOMES EXTINGUISHED IN USE, WAIT 3 MINUTES BEFORE ATTEMPTING TO RELIGHT.



IMPORTANT: YELLOW FLAMES TYPICALLY APPEAR WHEN THE APPLIANCE HAS REACHED NORMAL OPERATING TEMPERATURE. THIS CAN TAKE UP TO 30 MINUTES.

To Switch the Appliance OFF:

- 5.6 To turn the appliance **OFF** press the On/Off button once.

Touch Pad Control Not Working

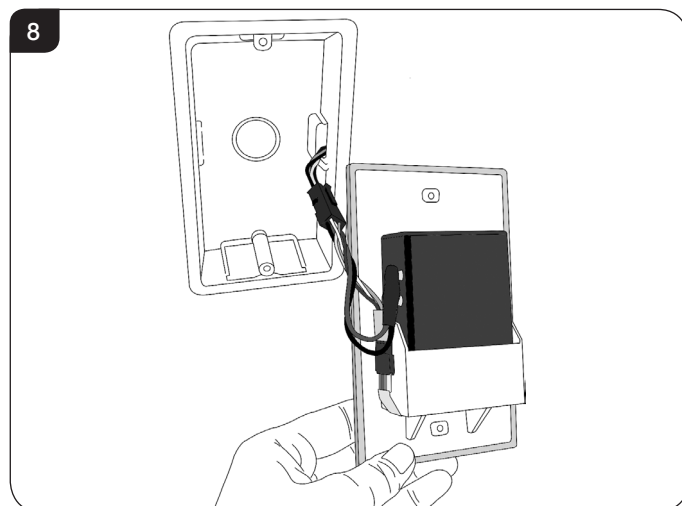
If the appliance is not operating with the touch pad control:

- 5.7 Replace the batteries in the wall switch unit, see Section 6.
- 5.8 If the appliance still fails to operate consult your installer or Gazco retailer.

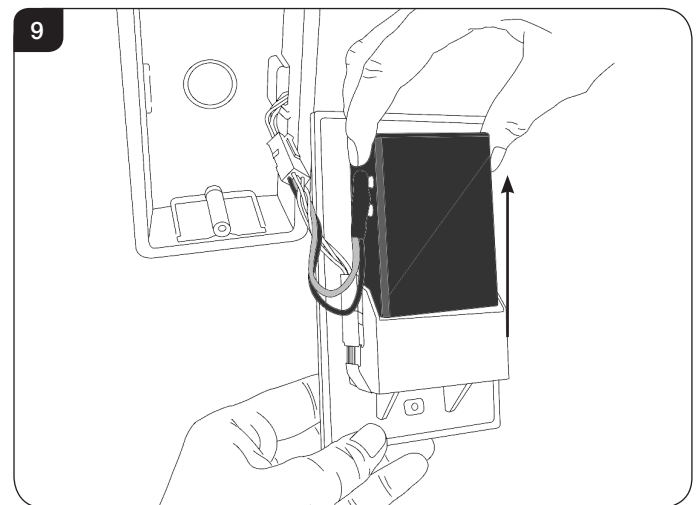
6. Changing the Appliance Batteries

The appliance batteries are located behind the wall switch plate.

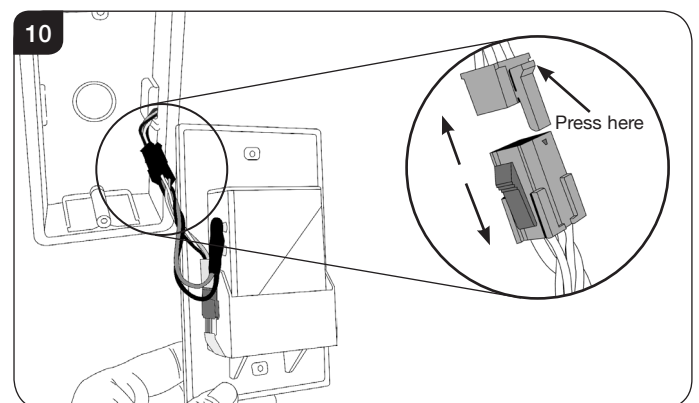
- 6.1 Undo the two screws securing the wall plate and gently bring it forward to expose the wires behind. Keep the wall plate supported, taking care not to put any strain on the wires, see Diagram 8.



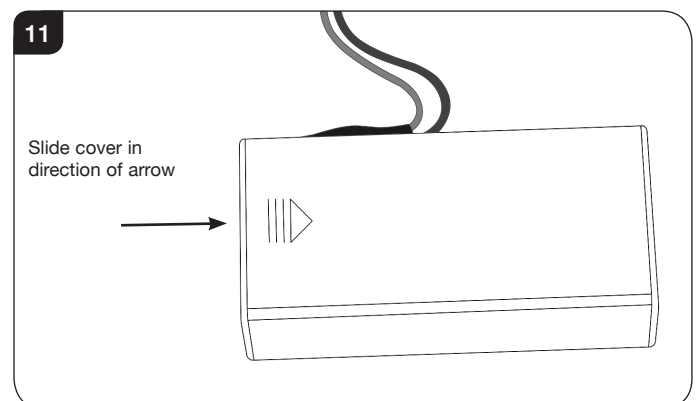
- 6.2 Whilst supporting the wall plate remove the battery holder from its location, see Diagram 9.



- 6.3 If it is not possible to support the wall plate and battery holder at the same time separate the wall plate from the dry lining box by disconnecting the plug as shown, see Diagram 10. Press the top of the clip on the upper section to release.

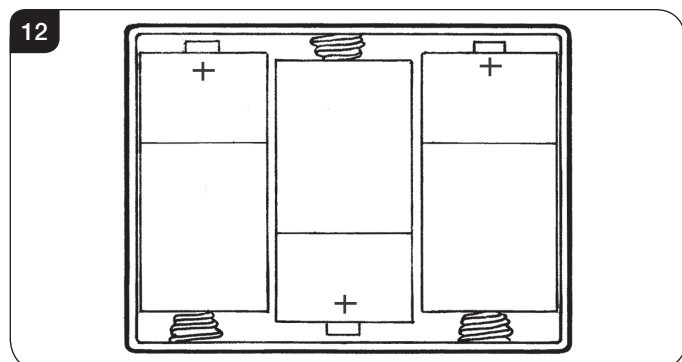


- 6.4 Flip the battery holder over end to end and remove the cover by sliding off in the direction of the arrow as shown in, see Diagram 11.



User Instructions

- 6.5 Remove the old batteries and correctly position the three new high quality (Duracell or similar) size C batteries into the battery holder, see Diagram 12.



- 6.6 Re-assemble in reverse.

PLEASE ENSURE NO WIRES ARE TRAPPED BEFORE REPLACING THE WALL PLATE. THE TOUCH PAD LEAD IS EASILY DAMAGED.

7. Cleaning the Studio

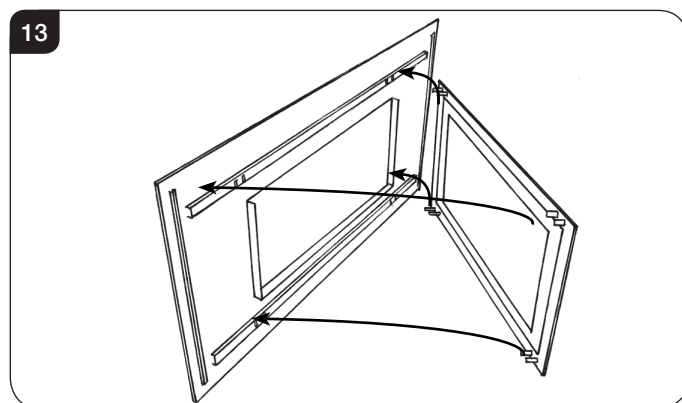
- 7.1 Make sure the appliance and surrounds are cool before cleaning.
- 7.2 Use:
- A dry cloth or stainless steel product to clean the polished plate.
 - A damp cloth for the painted frame.
 - A damp cloth to clean the granite/enamelled inner panels.
 - Soap and water to clean the glass.

Opening the Glass Window:

7.3 Steel, Verve or Glass Frame

If fitted with a Steel, Verve or Glass Frame, this needs to be removed first:

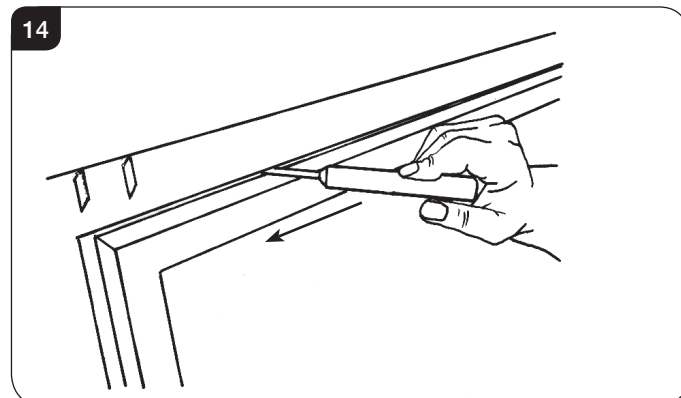
- 7.4 Lift the frame upwards off its four support brackets, see Diagram 13.



All models

- 7.5 Using the hexagon key provided release the window locks at the top of the glass door, see Diagram 14.

- 7.6 The locks move from shut to open towards the outer edges of the glass door, see Diagram 14.



- 7.7 Support the frame and let it fall gently forward.
- 7.8 Open it down to its natural stop position. Note the door does not open flat.
- 7.9 When closing the window ensure the window catches are fully engaged.



UNDER NO CIRCUMSTANCES SHOULD THE APPLIANCE BE USED WITHOUT THE CATCHES HOLDING THE DOOR IN PLACE.

8. Arrangement of the fuel bed

Advice on handling and disposal of fire ceramics



The fuel effect and liners of this appliance are made from Refractory Ceramic Fibre (RCF), a material which is commonly used for this application.

Protective clothing is not required when handling these articles, but we recommend you follow normal hygiene rules of not smoking, eating or drinking in the work area and always wash your hands before eating or drinking.

To ensure that the release of RCF fibres are kept to a minimum, during installation and servicing a HEPA filtered vacuum is recommended to remove any dust accumulated in and around the appliance before and after working on it. When servicing the appliance it is recommended that the replaced items are not broken up, but are sealed within heavy duty polythene bags and labelled as RCF waste.

RCF waste is classed as stable, non-reactive hazardous waste and may be disposed of at a licensed landfill site.

Excessive exposure to these materials may cause temporary irritation to eyes, skin and respiratory tract; wash hands thoroughly after handling the material.

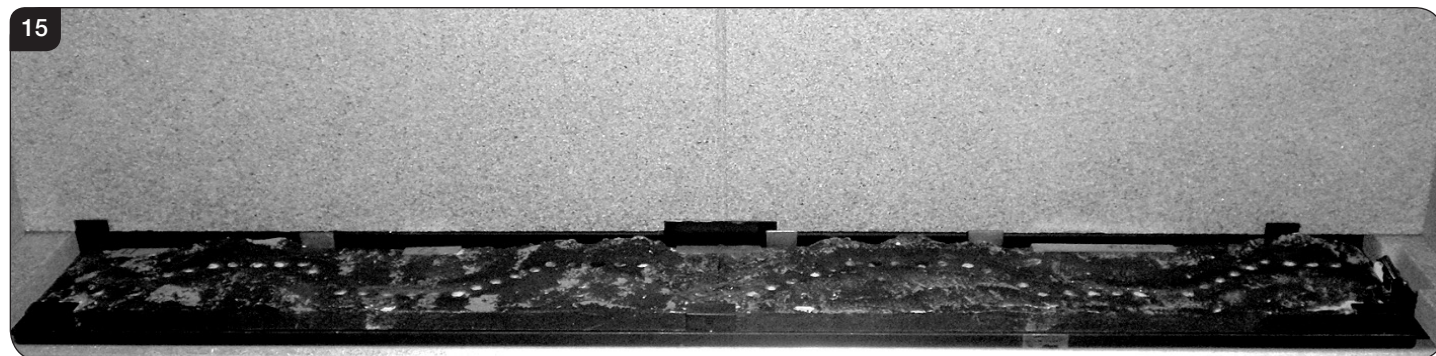
User Instructions

9. Log Layout

LOGS MUST BE POSITIONED ACCORDING TO THE FOLLOWING INSTRUCTIONS TO GIVE THE CORRECT FLAME EFFECT

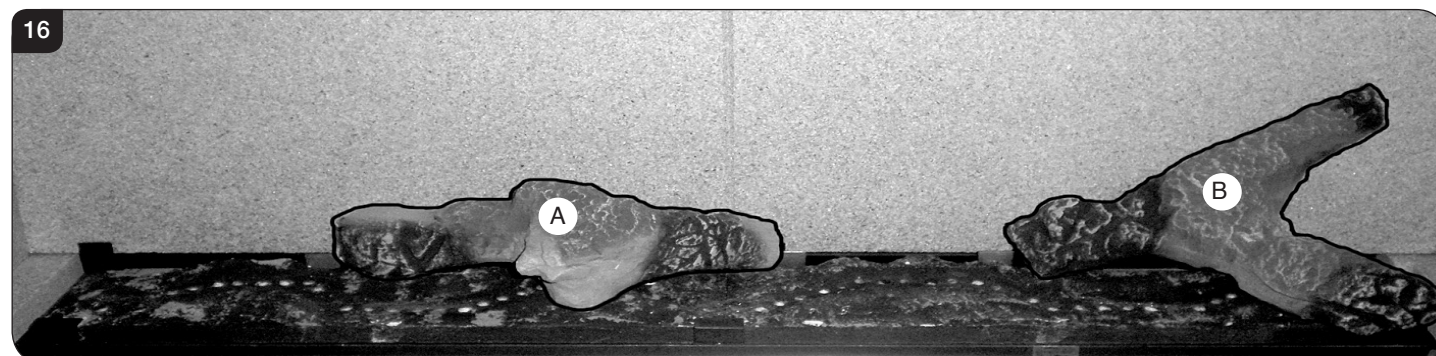
9.1 Ensure the burner tray is clean and free from any debris.

9.2 All logs can be identified by a letter (A - D) on their underside.



9.3 Position Log A between the two tabs at the back of the burner tray, see Diagram 16. Ensure that it is pushed back against the back panel.

9.4 Place the left hand end of Log B against the back right tab on the burner tray, see Diagram 16. Ensure that the front branch is in line with the front of the burner tray.

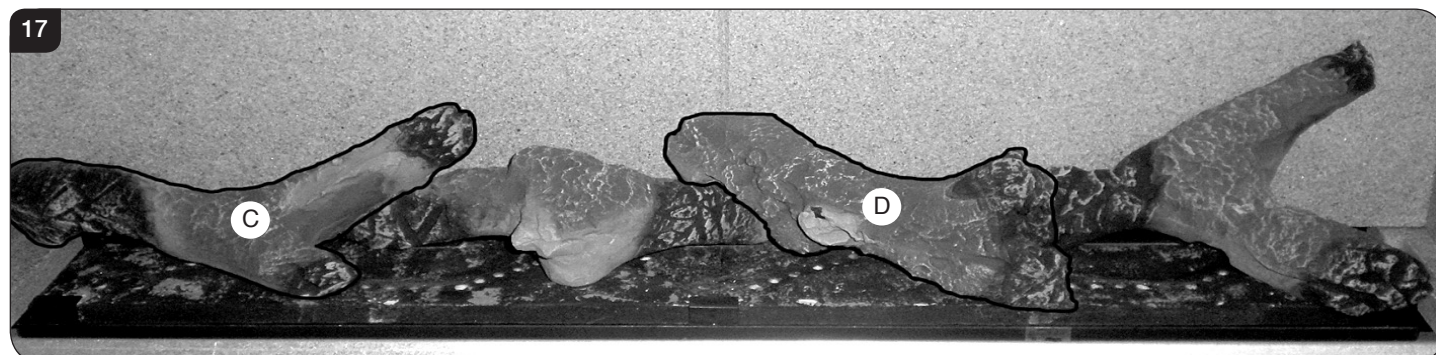


9.5 Rest the left end of Log C on the bottom left vermiculite panel in the back left corner, see Diagram 17.

The right end of Log C rests across Log A with the small front branch resting on the burner tray.

9.6 Engage the left hand end of Log D with the right hand end of Log A.

The right hand end of Log D fits against the metal stop on the front of the burner tray.



User Instructions

9.7 Separate the Embaglow material into smaller pieces and pull into shape to create a fine layer.

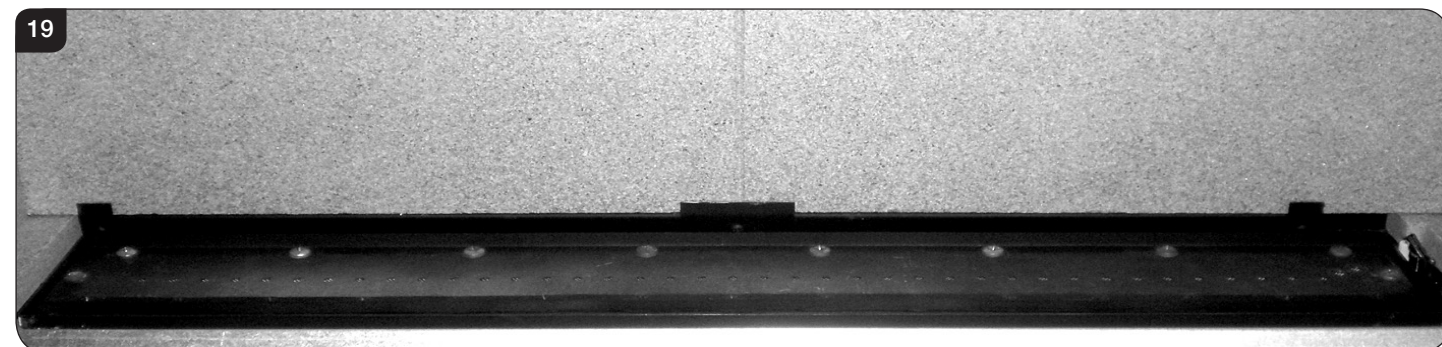
9.8 Place the pieces of Embaglow between the logs in the highlighted areas shown in Diagram 18. Ensure the material is placed loosely between the logs to create a random glow.



10. Stone/ Glass Fuel Effect Layout

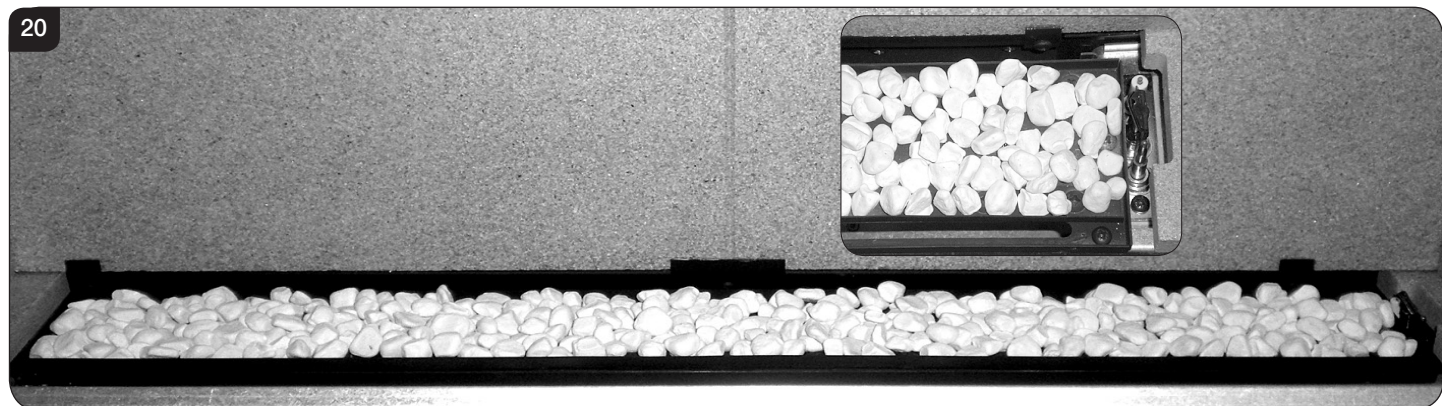
10.1 To use the white stone or glass granule fuel effect, apply according to the following instructions to give the correct flame effect.

10.2 Ensure the burner tray is clean and free from any debris, see Diagram 19.



10.3 Fill the tray making sure the effect is flattened so it is level with the rim of the tray. DO NOT OVERFILL THE BURNER TRAY, see Diagram 20.

TAKE CARE NOT TO SPILL EFFECT INTO THE PILOT AREA FRONT CHANNEL OR GAP AT REAR OF TRAY. ONLY GENUINE GAZCO PARTS CAN BE USED IN THIS APPLIANCE.



User Instructions

11. Flame Failure Device

- 11.1 This is a safety feature incorporated on this appliance which automatically switches off the gas supply if the pilot goes out and fails to heat the thermocouple.

IF THIS OCCURS DO NOT ATTEMPT TO RELIGHT THE APPLIANCE FOR 3 MINUTES.

12. Running In

- 12.1 During initial use of a new GAZCO appliance a strong odour will be encountered as various surface coatings become hot for the first time. Although these odours are harmless it is recommended that the appliance is operated on maximum for 4 to 8 hours in order to fully burn off these coatings. After this period the odours should then disappear.

If the odours persists, please contact your installer for advice.

- 12.2 During the first few hours of burning there may be discolouration of the flames. This will also disappear after a short period of use.

13. Servicing

- 13.1 The appliance must be serviced every 12 months by a qualified Gas Engineer. In all correspondence always quote the Model number and the Serial number which may be found on the data badge.

14. Ventilation

- 14.1 Any purpose provided ventilation should be checked periodically to ensure that it is free from obstruction.

15. Installation Details

- 15.1 Your installer should have completed the commissioning sheet at the front of this book. This records the essential installation details of the appliance. In all correspondence always quote the Model number and Serial number.

16. Hot Surfaces

- 16.1 Parts of this appliance become hot during normal use.
- 16.2 Regard all parts of the appliance as a working surface.
- 16.3 Provide a suitable fire guard to protect young children and the infirm.

17. Appliance will not light

If you cannot light the Studio:

- 17.1 Check and change the batteries in the remote handset.
- 17.2 Check and change the wall switch batteries (see Section 6).
- 17.3 Consult your Gazco retailer or installer if the Studio still does not light.

Installation Instructions

Technical Specification

Covering the following models:

	Nat Gas	LPG
Log Effect	123-191	123-489
White Stone Effect	123-238	123-642

Model	Gas CAT.	Gas Type	Working Pressure	Aeration	Injector	Gas Rate m ³ /h	Input kW (Gross)		Country
							High	Low	
Studio Slimline Log Effect	I ₂ H	Natural (G20)	20mbar	2 x 6.5mm	170	0.492	5.2	3.5	GB, IE
	I ₃ P	Propane (G31)	37mbar	2 x (25x15)	150	0.188	5.1	3.4	GB, IE
Studio Slimline Stone Effect	I ₂ H	Natural (G20)	20mbar	2 x 8mm	170	0.492	5.2	3.5	GB, IE
	I ₃ P	Propane (G31)	37mbar	2 x (25x15)	150	0.188	5.1	3.4	GB, IE
Efficiency Class 1 - 82% / NO _x Class 4									
Flue Outlet Size Ø 150mm									
Flue Inlet Size Ø 100mm									
Gas Inlet Connection Size Ø 8mm									

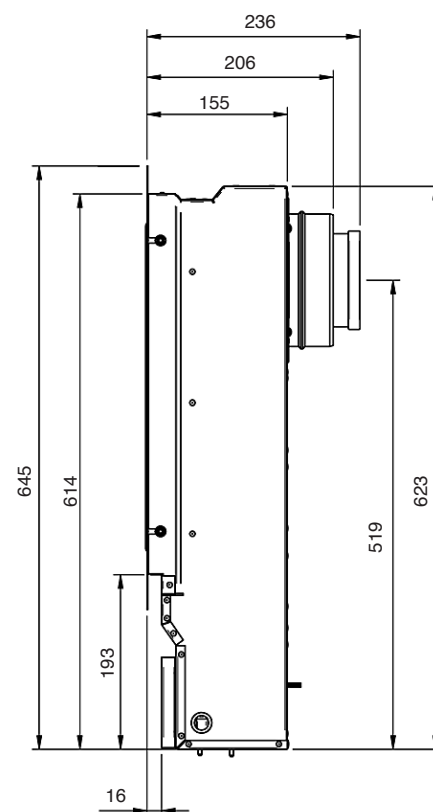
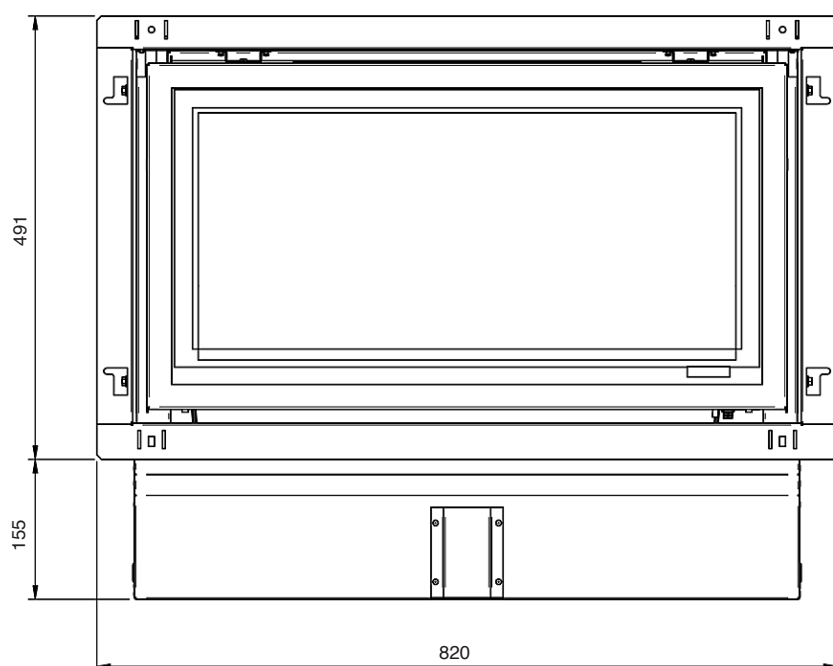
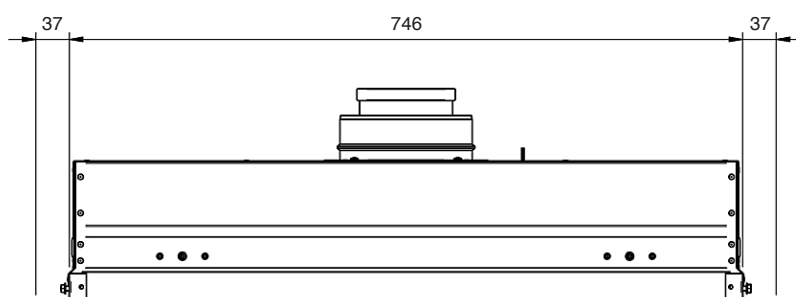
Installation Instructions

Technical Specification

This appliance has been certified for use in countries other than those stated. To install this appliance in these countries, it is essential to obtain the translated instructions and in some cases the appliance will require modification. Contact Gazco for further information.

PACKING CHECKLIST

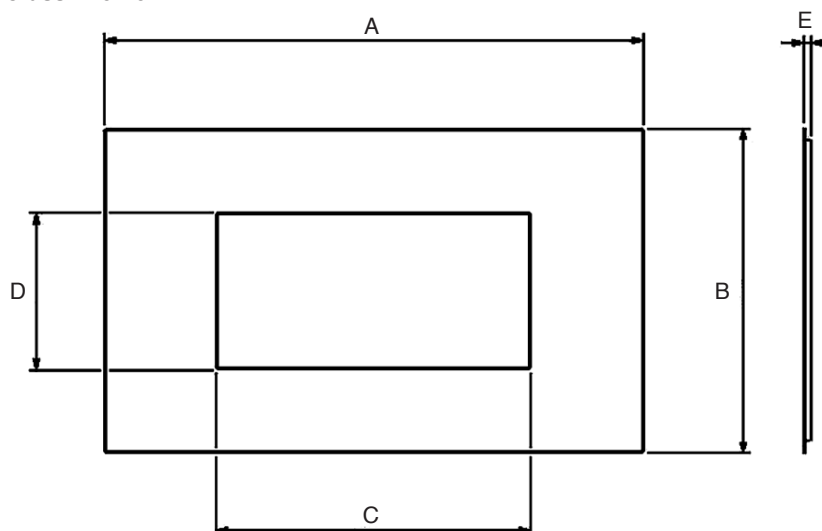
Qty Description	Fixing Kit containing:
For Stone Chippings Layout	1 x Instruction Manual
1 White Stone Chippings	6 x Wood Screws
1 Liner Set	6 x Wall Plugs
	1 x Handset
For Log Layout	2 x AA 1.5 alkaline batteries
1 Log Set	3 x Size C batteries
1 Liner Set	1 x Wall box
1 Bag Embaglow material	1 x Wall plate / touch pad
	1 x Battery holder



Installation Instructions

Technical Specification

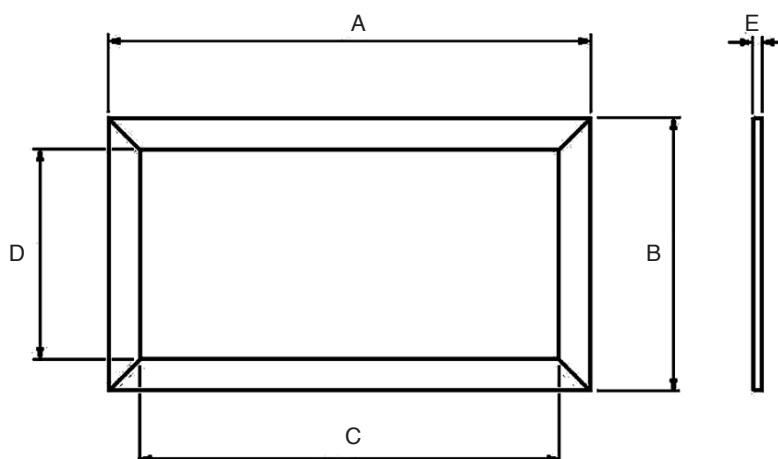
Steel / Glass / Verve



Steel / Glass / Verve Fronts

Front	A	B	C	D	E
Steel	1264	528	646	320	27
Glass	1264	528	650	324	29
Verve	1264	528	650	324	53

Profil / Bauhaus



Profil / Bauhaus Frames

Front	A	B	C	D	E
Profil	836	510	740	414	12.5
Bauhaus	850	524	740	414	28

Installation Instructions

Site Requirements

1. Flue & Chimney Requirements

Note: This appliance must only be installed with the flue supplied.

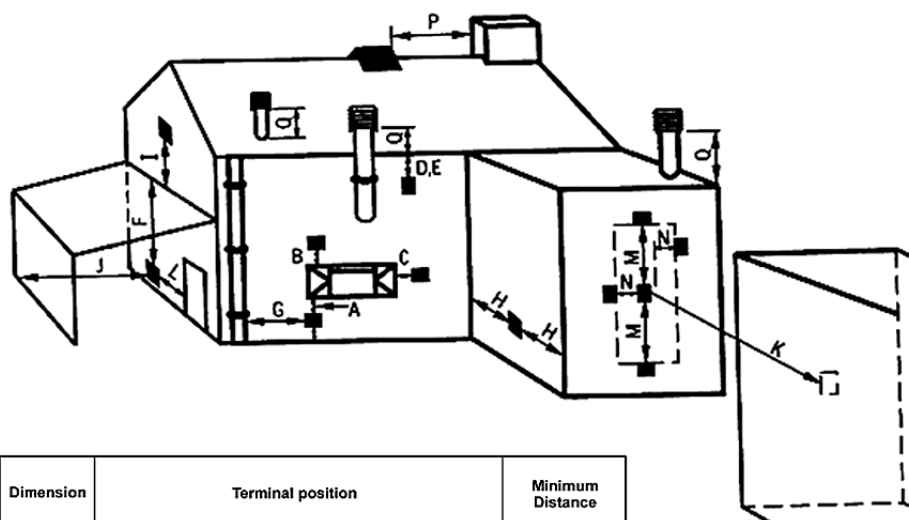
You must adhere to the following:

- 1.1 The flue must be sited in accordance with BS5440: Part 1 (latest edition), see Diagram 1.
- 1.2 Fit a guard to protect people from any terminal less than 2 metres above any access such as level ground, a balcony or above a flat roof.
- 1.3 All horizontal flues must be securely fixed and fire precautions followed in accordance with local and national codes of practice.
- 1.5 To measure for a horizontal terminal decide on the terminal position.

- 1.6 Measure the height from the top of the appliance to the centre of the required outlet.
- 1.7 For minimum and maximum flue dimensions see Diagrams 2.
- 1.8 Support the opening of a masonry installation with a lintel.
- 1.9 Only the horizontal terminal section can be reduced in size.

1

UK Dimensions



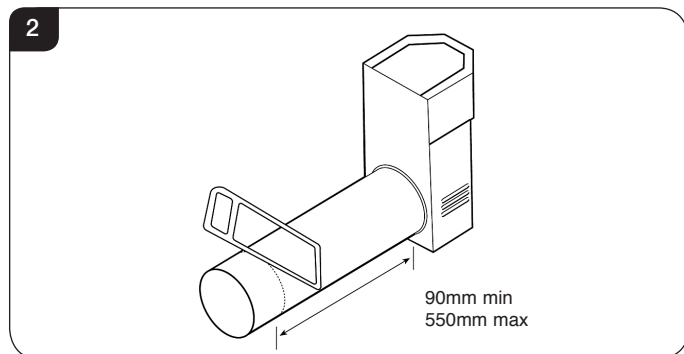
Dimension	Terminal position	Minimum Distance
A*	Directly below an opening, air brick, opening windows, etc.	600mm
B*	Above an opening, air brick opening windows, etc.	300mm
C*	Horizontally to an opening, air brick opening windows etc.	400mm
D	Below gutters, soil pipes or drain pipe	300mm
E	Below eaves	300mm
F	Below balconies or car port roof	600mm
G	From a vertical drain pipe or soil pipe	300mm
H	From an internal or external corner	600mm
I	Above group roof or balcony level	300mm
J	From a surface facing the terminal (also see 6.1.2)	600mm
K	From a terminal facing the terminal	600mm
L	From an opening in the car port (e.g. door, window) into the dwelling	1200mm
M	Vertically from a terminal on the same wall	1500mm
N	Horizontally from a terminal on the same wall	300mm
O	From the wall on which the terminal is mounted	N/A
P	From a vertical structure on the roof	600mm
Q	Above intersection with roof	300mm

* In addition, the terminal should not be nearer than 300mm to an opening in the building fabric formed for the purpose of accommodating a built-in element such as a window frame

Installation Instructions

Site Requirements

2. Rear Flue



Terminal dimensions:
395 x 200 x 200 mm (H x W x D)
Guard supplied
Cut to length as required on site.

- 2.1 Decide on the terminal position.
- 2.2 Measure the height from the finished hearth level/ base of the appliance to the centre of the required hole.
- 2.3 A masonry installation requires the addition of a suitable lintel to support the opening. Refer to Installation Instructions, Technical Information for details of the flue length.

NOTE - Carefully consider:

- a) Terminal positions
- b) Flue supports
- c) Weatherproofing
- d) Fire precautions

For all the above options, you must conform to local and national codes of practice.

- 2.4 **Use only Gazco supplied flue on this appliance.**
- 2.5 **A guard (supplied) must be fitted to any terminal less than 2 metres above any access such as level ground, a balcony or above a flat roof.**

Timber Framed Buildings

- 2.6 It will be necessary to provide additional clearance when the flue passes through a wall containing any combustible materials so as to prevent a fire hazard.
- 2.7 The hole through which the flue will pass, must have a steel sleeve which is positioned so that an air gap of at least 25mm is maintained between the outer surface of the flue, and any part of the sleeve.
- 2.8 For further guidance on the installation of gas appliances in timber framed buildings, contact your local buildings control authority.

3. Gas Supply

THIS APPLIANCE IS INTENDED FOR USE ON A GAS INSTALLATION WITH A GOVERNED METER.

- 3.1 Before installation, ensure that the local distribution conditions (identification of the type of gas and pressure) and the adjustment of the appliance are compatible.
- 3.2 Ensure the gas supply delivers the required amount of gas and is in accordance with the rules in force.
- 3.3 You can use soft copper tubing on the installation and soft soldered joints outside the appliance .
- 3.4 If it is intended to conceal the gas supply within the wall cavity, there must be no joints in any part of the supply that are not readily accessible when the appliance has been installed.
- 3.5 A factory fitted isolation device is part of the inlet connection; no further isolation device is required.
- 3.6 All supply gas pipes must be purged of any debris that may have entered prior to connection to the appliance.
- 3.7 The gas supply enters through the silicone panel located on the LEFT-HAND rear or base of the outer box. Slit with a sharp knife before passing the supply pipe through
- 3.8 The gas supply must be installed in a way that does not restrict the removal of the appliance for servicing and inspection.
- 3.9 The supply pipe may be installed in several ways.
 - 1) By drilling a hole straight through the outside wall. There is a cutout in the back panel of the appliance to allow the pipe to be concealed within the appliance.
 - 2) The gas pipe can be concealed by cutting a channel in the wall. All current regulations must be adhered to and no pipe joint must be concealed in the wall.

4. Ventilation

- 4.1 This appliance requires no additional ventilation.

Installation Instructions

Site Requirements

5. Appliance Location



Note: This appliance has been primarily designed to be recessed into the internal brickwork of a standard cavity wall. However, it is also possible to install the appliance into a false chimney breast constructed of studwork and heat resistant cladding.

- 5.1 If this appliance is fitted at floor level (giving a visible opening located 193mm from the floor) then it will require a hearth to protect the floor. The hearth should have a minimum non combustible thickness of 12mm, projecting 300mm in front and 150mm either side of the base of the appliance.

The three methods of studwork installation are:

Frame (see Installation Instructions, Section 8).

Edge (see Installation Instructions, Section 9).

Cool Wall (see Installation Instructions, Section 10).

- 5.2 This appliance must stand on a non-combustible platform that is at least 12mm thick.

NOTE: If you intend to construct the fascia of the fireplace opening from natural materials it is recommended you cut this into three or more sections to prevent cracking. Resin-based materials are not suitable. This appliance is an effective heat producer and attention must be paid to the construction and finish of the fireplace.

- 5.3 A combustible shelf must be:

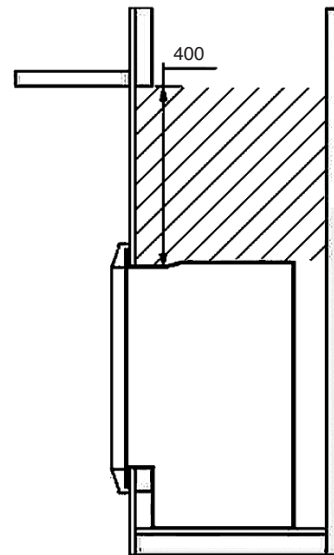
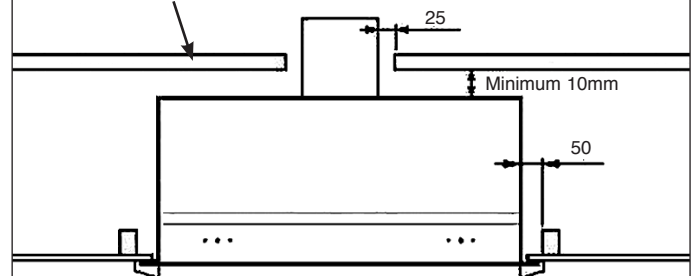
- Maximum 150mm in depth.
- Minimum 400mm high above the appliance.

A combustible side wall must be a minimum of 150mm from the appliance.

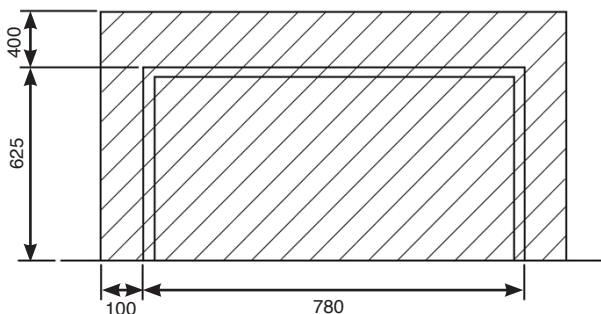
- 5.4 This appliance is not suitable for installation onto or against a combustible wall. Remove all combustible material from the area shown, see Diagrams 3 and 4.

4

Minimum 10mm thick non combustible material (fireproof board or similar)



3



Installation Instructions

1. Safety Precautions

- 1.1 For your own and other's safety, you must install this appliance according to local and national codes of practice. Failure to install the appliance correctly could lead to prosecution. **Read these instructions before installing and using this appliance.**
- 1.2 These instructions must be left intact with the user.
- 1.3 Do not attempt to burn rubbish on this appliance.
- 1.4 Keep all plastic bags away from young children.
- 1.5 Do not place any object on or near to the appliance and allow adequate clearance above the appliance.

IF THE APPLIANCE IS EXTINGUISHED OR GOES OUT IN USE, WAIT 3 MINUTES BEFORE ATTEMPTING TO RELIGHT THE APPLIANCE.

i **IMPORTANT: REFER TO DATA BADGE AND TECHNICAL SPECIFICATION AT THE FRONT OF THE MANUAL TO ENSURE THE APPLIANCE IS CORRECTLY ADJUSTED FOR THE GAS TYPE AND CATEGORY APPLICABLE IN THE COUNTRY OF USE.**

FOR DETAILS OF CHANGING BETWEEN GAS TYPES REFER TO SERVICING, SECTION 15, REPLACING PARTS.

Unpacking

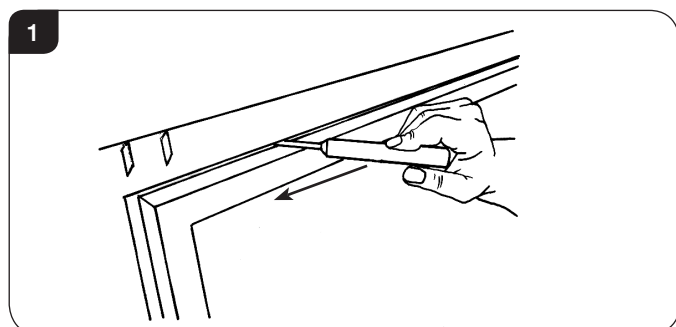
- 1.6 Remove the appliance from its packaging, and check that it is complete and undamaged.

Put the loose ceramic parts to one side so that they are not damaged during installation.

2. Installation of the Appliance

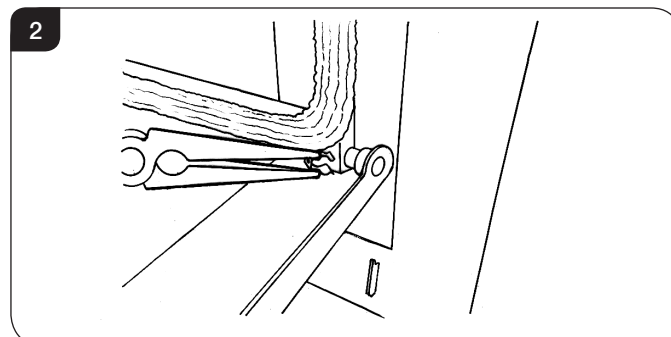
i **Note: This appliance has been designed to fit a masonry opening, however a studwork installation is possible if required.**

- 2.1 To open the glass door, use the hexagon key provided:
- 2.2 Release the window locks moving each from shut to open towards the outer edge of the glass door, see Diagram 1.

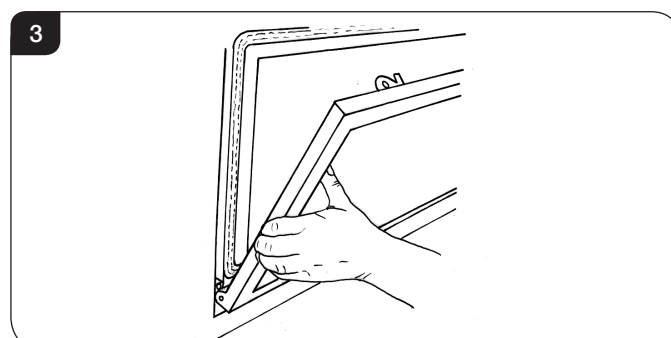


For ease of installation it is advisable to completely remove the glass front:

- 2.3 Remove the securing spring clip from the bottom-right of the window frame, see Diagram 2.



- 2.4 With the window frame in an upright position slide the frame to the left so that it comes off the left hinge pin.
- 2.5 Still keeping the frame upright drop the left side down and forward slightly, see Diagram 3.



- 2.6 Slide the frame to the right so it comes off the right hinge pin. The window frame should now be free.

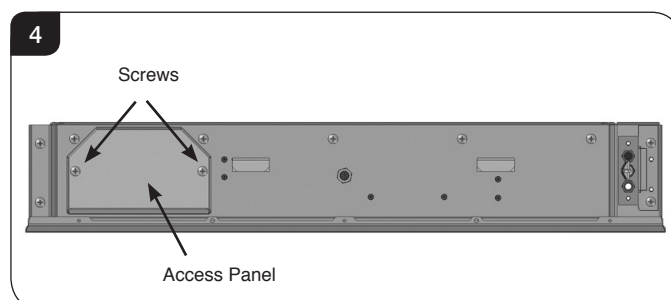
- 2.7 Place carefully to one side.

- 2.8 Remove all the liners, see Replacing Parts, Section 5.

- 2.9 Remove the Main Burner, see Replacing Parts, Section 6.

- 2.10 Remove the Main Control Assembly, see Replacing Parts, Section 7.

- 2.11 The gas supply enters the appliance through a silicon panel either on the floor or in the back panel under the access panel, see Diagram 4.



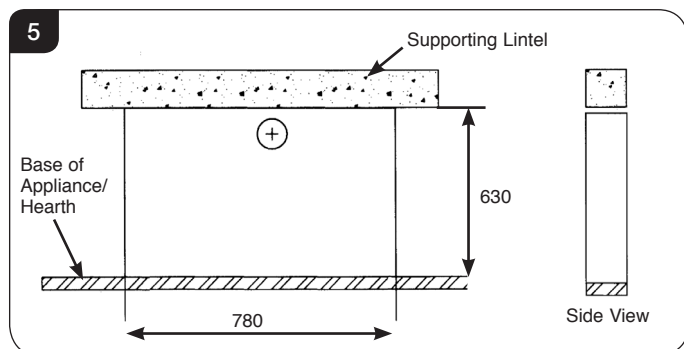
- 2.12 Slit with a sharp knife before bringing through the supply pipe.

Installation Instructions

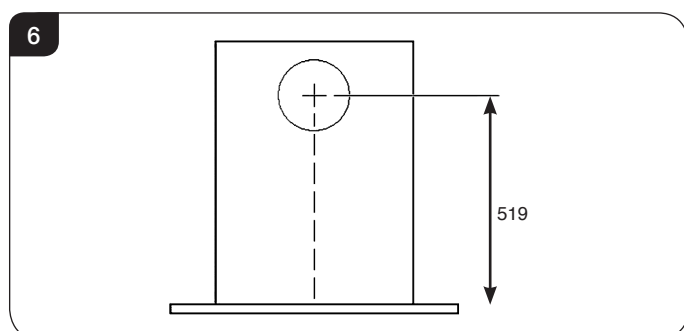
3. Masonry Installation

This method of installation requires structural alteration to the intended location. A suitable supporting lintel must be installed to maintain the structural integrity of the surrounding blockwork.

- 3.1 Mark the position of the lintel so that it sits centrally over the intended installation. Remove the blockwork and install the lintel using mortar to ensure a strong bond with the surrounding wall, see Diagram 5.



- 3.2 With the lintel in position mark the width of the aperture and remove the blockwork.
- 3.3 Seal the cavity with non combustible board, to prevent any insulation touching the appliance.
- 3.4 Ensure that there is a minimum of 10mm gap left between the back of the appliance and the outer wall. **There must be no combustible materials behind this appliance.**
- 3.5 Consider the final flue position ensuring that all required clearances are complied with, see Site Requirements Section 1.
- 3.6 Mark the position of the flue on the wall by measuring from the top of the finished hearth level/ base of the appliance, see Diagram 6.



- 3.7 A 152mm (6") diameter hole is required to install the flue. This can be achieved by either:
a) Core drill
b) Hammer and chisel
It is advisable to drill small holes around the circumference when using method b. Make good both ends of the hole.
- 3.8 Prepare gas supply and cable.
If installing into a cavity, no joints should be within the cavity and the pipe must be sleeved. Refer to gas installation requirements.

- 3.9 Install the touchpad cable and wall switch box.
Gazco recommend that the cable is installed through conduit or similar to give protection and allow for future servicing.

When deciding the route of the cables consideration must be given to avoid contact with the appliance and the flue system.



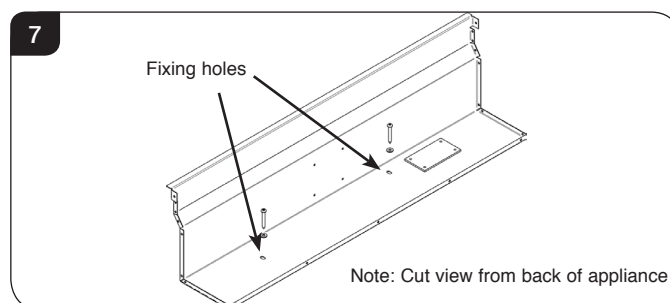
IMPORTANT - Do not run the touchpad cable up the side of the appliance outer casing.

See Section 11 for touchpad and batteries installation



The wall switch must be installed using a non-metallic mounting box, please ensure that the plastic dry lining box is used where possible. For masonry installation it is possible to drill through the rear of the box and secure in position using wall plugs and screws although a small amount of finishing work will be required to cover the plastic side securing tags. Alternatively a standard 45mm (or greater) deep pattress box can be used to surface mount the wall switch.

- 3.10 Position the appliance in the aperture, ensure that the appliance is level and that the front edge aligns with the proposed front face of the wall.
- 3.11 Mark the fixing holes in the base of the appliance.
- 3.12 Remove the appliance then drill and plug the holes.
- 3.13 Position the appliance in the aperture. It will be necessary to pass the gas supply pipe with the elbow through the silicone panel and the touchpad cable through the left or right hand rubber grommit.
- 3.14 Secure the appliance through the fixing holes in the base and check the appliance is level, see Diagram 7.



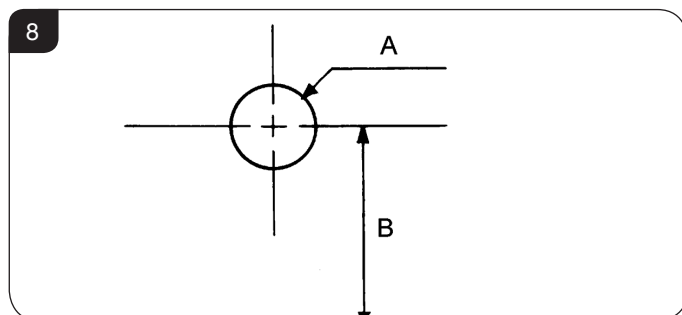
4. Flue Assembly

- 4.1 **FLUE LENGTH:** MIN = 90mm
MAX = 550mm
- 4.2 Unpack the adjustable flue assembly and terminal guard.
- 4.3 Do not lose the fixings.
- 4.4 Consider the final appliance position ensuring you comply with clearances required for the external flue, see Site Requirements, Section 1.

Installation Instructions

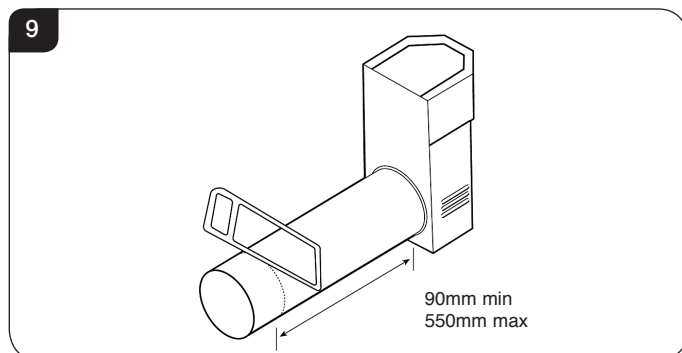
- 4.5 Mark the vertical centre-line of the appliance on the wall, see Diagram 8, A.
- 4.6 Mark the height from the top of the hearth/ base of appliance to the centre of the flue, see Diagram 8, B.

TAKE CARE TO MARK OUT THE FLUE CORRECTLY. IT IS DIFFICULT TO MOVE AFTER INSTALLATION.



Flue Length

- 4.7 With the appliance secured in place, (minimum 10mm gap between the back of appliance and the wall) measure the distance from the back of the appliance to the outside face of the wall. Deduct 18mm from this measurement.
- 4.8 Insert the square cardboard sleeve into the flue to support the inner tube.
- 4.9 Cut through the flue and sleeve, see Diagram 9.



- 4.10 **REMOVE THE CARDBOARD REMNANTS FROM THE FLUE.**
- 4.11 File the cut edges smooth.

Terminal

On the outside wall:

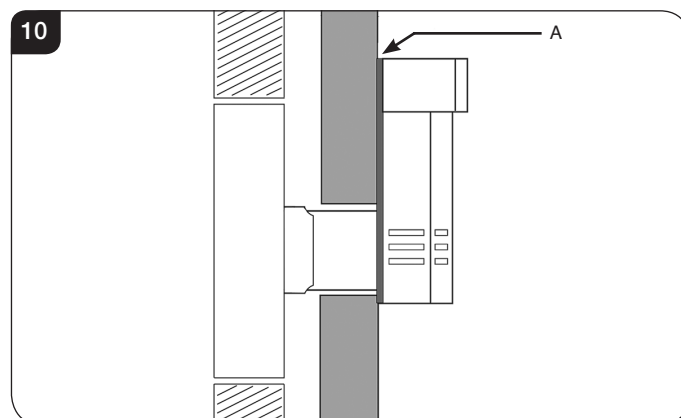
- 4.12 Position the flue assembly into the hole. The terminal should be flat against the wall.
- 4.13 Make sure the terminal is vertical, see Diagram 10.

- 4.14 Mark the 4 fixing holes.
- 4.15 Remove the terminal to drill the holes.
- 4.16 Insert wall plugs supplied.

DO NOT FIX THE FLUE AT THIS STAGE.

Flue and Appliance Fixings

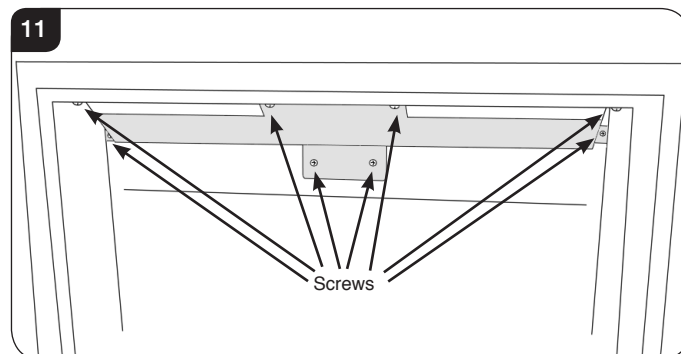
- 4.17 Position the appliance observing appropriate clearances.
- 4.18 Apply a bead of suitable weatherproof sealant (silicone or similar) to perimeter of back face of terminal, see Diagram 10.



- 4.19 Feed the flue through the wall, making sure it runs smoothly.
- 4.20 Engage the flue in the inner and outer spigots.
- 4.21 Make sure rubber seal on the inner spigot is not damaged, it may be necessary to lubricate the seals with washing up liquid (or similar) to ease assembly.

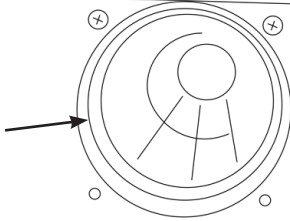
i To ensure a successful installation take out the baffle plate by removing the 8 fixing screws, see Diagram 11.

It is now possible to view if the end of the flue is located correctly, see Diagram 12.



Installation Instructions

12

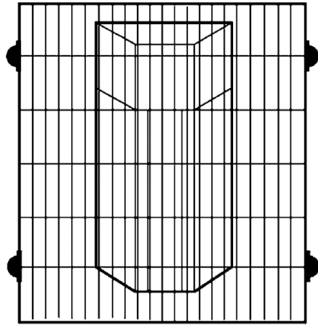


4.22 Insert 4 screws in the flanges of the flue terminal.

4.23 Check sealant has formed a water-tight joint to the wall.

4.24 Any terminal less than 2m above any access (level ground, balcony or flat roof with access) must be fitted with the guard supplied, see Diagram 13.

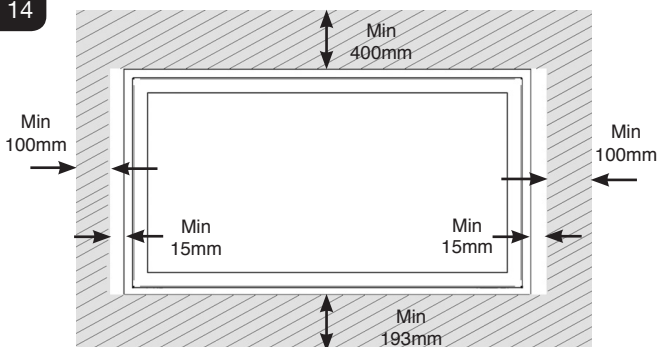
13



4.25 Finish the wall up to the edge of the appliance leaving a minimum of 15mm gap either side of the appliance to allow clearance for the sub frame fixings, see Diagram 14.

Ensure distance to combustibles are observed, see Diagram 14.

14



4.26 Fit non-combustible board from the bottom edge of the appliance to a minimum depth of 193mm, see Diagram 14. Finish these areas with heat resistant plaster.



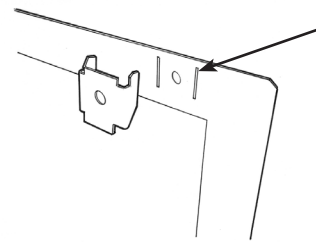
IMPORTANT - IT IS THE RESPONSIBILITY OF THE INSTALLER TO ENSURE THAT THE APPLIANCE IS FIXED SECURELY IN THE WALL.

5. Decorative Front

If fitting a decorative front:

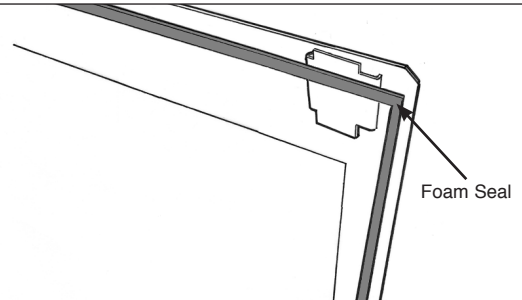
5.1 Attach the 4 x frame fixing brackets to the sub-frame, see Diagram 15.

15



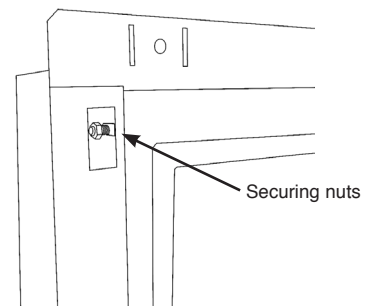
5.2 Fix foam seal to the rear of the outer flange of the appliance, see Diagram 16.

16



5.3 Fit the sub-frame to the appliance and ensure the returns of the sub-frame fit internally into the main outer box with the studs and securing nuts passing through the side slots. Secure by tightening the 4 nuts, see Diagram 17.

17



5.4 Secure the appliance and sub-frame to wall through the holes in the sub-frame with the screws provided.

5.5 If the finished wall does not line up with the top fixing holes in the sub-frame then the side holes can be used to fix the frame back to the wall. However, the frame fixing brackets **must** be fixed to the sub-frame.

Installation Instructions

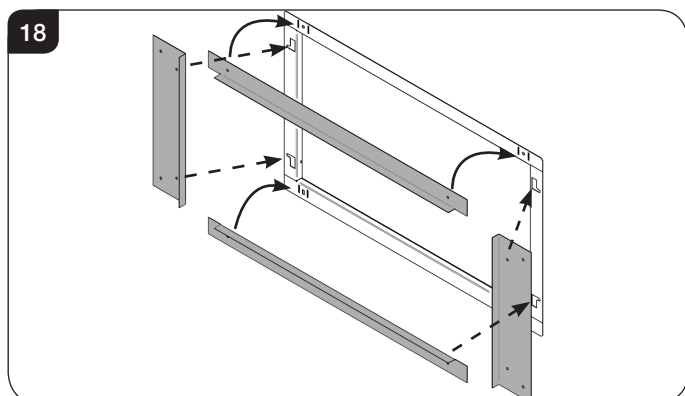
- 5.6 Screw the lower frame fixings through the sub-frame into the infill board at the base of the appliance.
- 5.7 Fit the decorative front referring to individual installation instructions.

6. Edge Kit

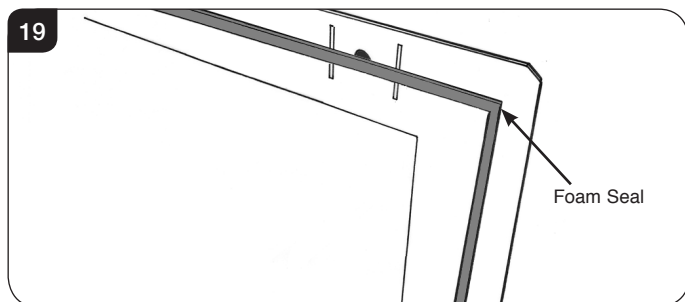
There is an optional Studio Edge Installation Kit available for installing the appliance without a frame: Studio 1 BF Code No. 8727BFEK01,.

Using the installation kit:

- 6.1 Fit the 4 metal brackets of the kit to the sub-frame and secure using the supplied fixings, see Diagram 18.



- 6.2 Fix foam seal to the rear of the outer flange of the appliance, see Diagram 19.



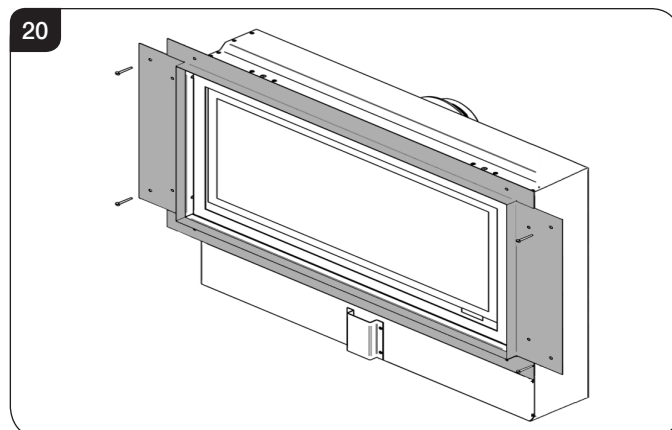
- 6.3 Fit the sub-frame to the appliance and ensure the returns of the sub-frame fit internally into the main outer box with the studs and securing nuts passing through the side slots. Secure by tightening the 4 nuts, see Diagram 17.

Note: It will be necessary to chase the wall out to allow for the edge kit fixings to be recessed into the wall.

- 6.4 Position the appliance in the aperture, ensure that the appliance is level and that the front edge aligns with the proposed front face of the wall.
- 6.5 Mark the fixing holes in the base of the appliance.
- 6.6 Remove the appliance then drill and plug the holes.
- 6.7 Position the appliance in the aperture. It will be necessary to pass the gas supply pipe with the elbow through the silicone panel and the touchpad cable through the left or right hand rubber grommit.

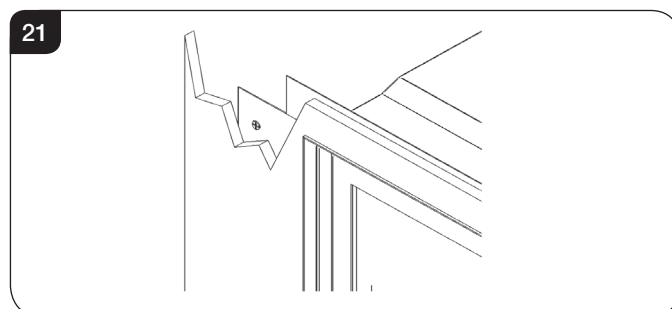
- 6.8 Secure the appliance through the fixing holes in the base and check the appliance is level, see Diagram 7.

- 6.8 Screw the Edge kit into the wall to the sides of the appliance, see Diagram 20.

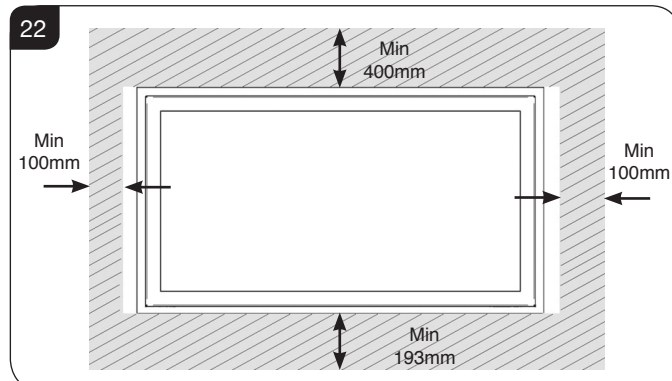


- 6.9 Fit the flue assembly, see Section 4.

- 6.10 The kit has been designed so that non-combustible board can be taken right up to the edge of the four brackets, see Diagrams 21.



- 6.11 Fit non-combustible board to the wall around the appliance. This should extend a minimum of 400mm above the appliance and 100mm at the sides, see Diagram 22.



- 6.12 Fit plasterboard to the remaining chimney breast front.

- 6.13 Apply a plaster finish to the chimney breast using heat resistant plaster in the area directly around the appliance, see Diagram 22.

7. Studwork Installation

THERE ARE THREE TYPES OF INSTALLATION INTO STUDWORK DESCRIBED IN THE FOLLOWING PAGES:

- 1) FOR STUDIO SLIMLINE WITH DECORATIVE FRONT (SEE SECTION 8).
- 2) FOR AN INSTALLATION WHERE THE STUDIO SLIMLINE SITS FLUSH TO THE FINISHED 'EDGE' OF THE WALL (SEE SECTION 9).
- 3) FOR A FURTHER 'EDGE' INSTALLATION PROVIDING A COOL WALL ABOVE THE APPLIANCE TO ALLOW CUSTOMERS TO HANG PICTURES ETC. (SEE SECTION 10).



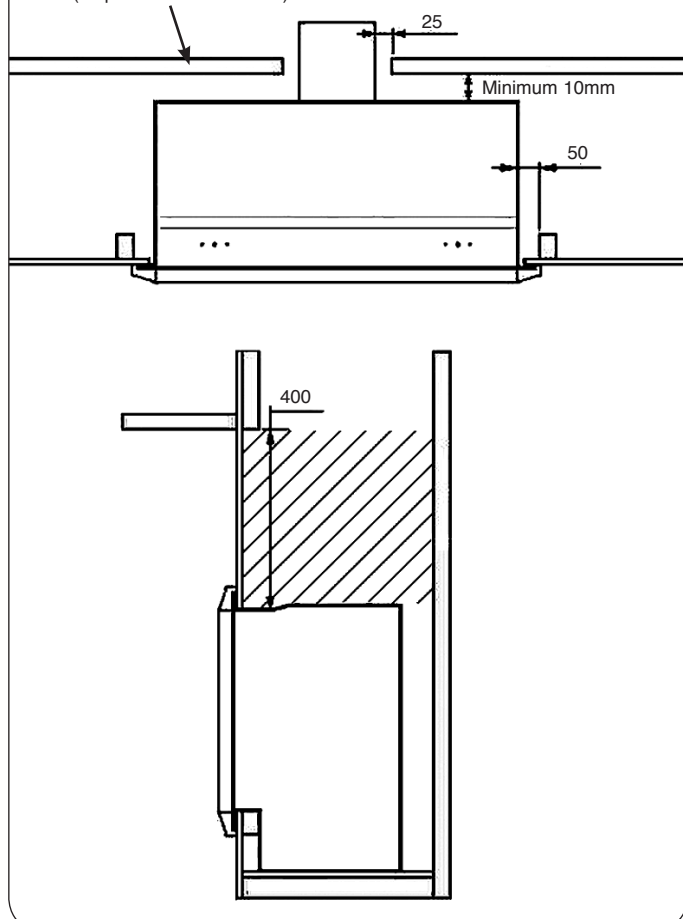
IMPORTANT : NEVER position an LCD/Plasma TV above this appliance.

7.1 DISTANCE TO COMBUSTIBLE MATERIAL

COMBUSTIBLE PARTS OF THE STUDWORK MUST BE KEPT BEYOND THE MINIMUM DIMENSIONS SHOWN IN DIAGRAM 23. EVEN IF THE FRAMEWORK IS PROTECTED BY NON-COMBUSTIBLE MATERIAL, YOU MUST MAINTAIN THESE DIMENSIONS, SEE DIAGRAM 23.

23

Minimum 10mm thick non combustible material (fireproof board or similar)

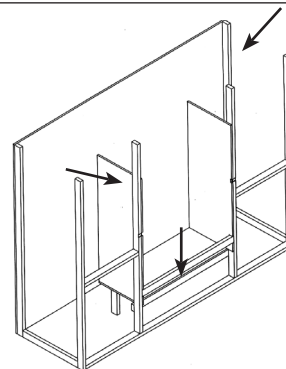


- 7.2 DO NOT PACK THE VOID AROUND OR ABOVE THE APPLIANCE WITH INSULATION MATERIALS SUCH AS MINERAL WOOL.
- 7.3 THE VOID BUILT FOR THE CASSETTE MUST BE VENTILATED TO PREVENT A BUILD-UP OF HEAT. IF THE VOID IS SEALED, THEN YOU MUST FIT VENTS AT BOTH LOW AND HIGH LEVELS OF APPROXIMATELY 50CM² EACH. THESE VENTS MUST TAKE COLD AIR FROM THE ROOM AND RETURN WARM AIR BACK INTO THE ROOM.
- 7.4 AN ACCESS HATCH MUST BE LEFT IN THE SIDE OF THE CHIMNEY BREAST FOR FUTURE SERVICING AND INSPECTION OF THE FLUE AND APPLIANCE.

8. Studwork Installation for Studio with frames

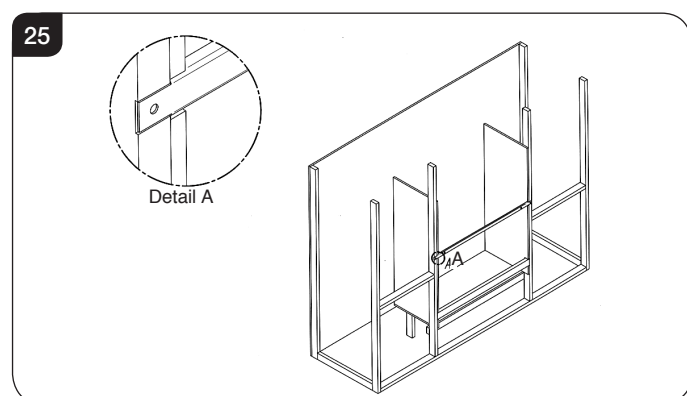
- 8.1 Build the studwork chimney breast and enclosures to the desired size to include the protected platform at the required height.
- 8.2 Line the aperture for the appliance with 12mm thick non-combustible material as shown, see Diagram 24.

24

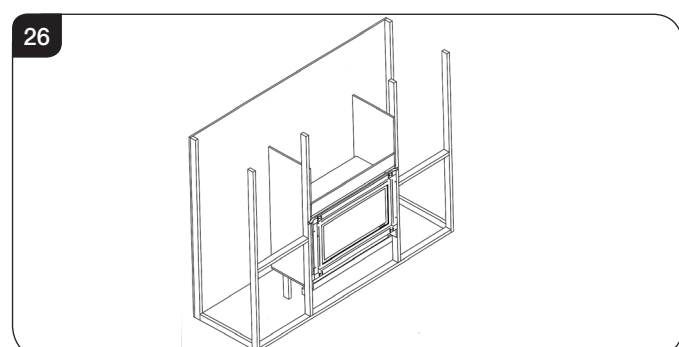


- 8.3 Ensure the clearances are maintained, see Diagram 23.
 - 8.4 Site the appliance and decide on flue requirements.
 - 8.5 Cut a hole for the flue exit, see Installation Instructions, Section 4.
 - 8.6 Provide gas services into the cassette void on the left-hand side.
- Because no combustible material can be used above the appliance, we provide a support bar:**
- 8.7 Mark out the position to fit the supplied top support bar into the studwork at the correct height. This bar needs to be recessed into the studwork, see Diagram 25.

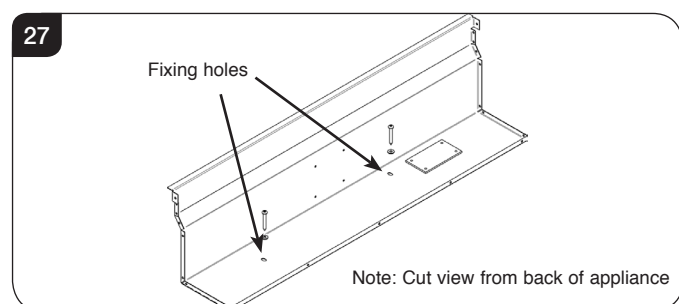
Installation Instructions



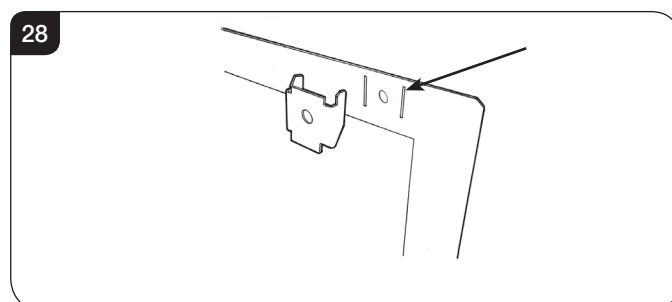
- 8.8 Fit the support bar into the studwork at the correct height, see Diagram 26.



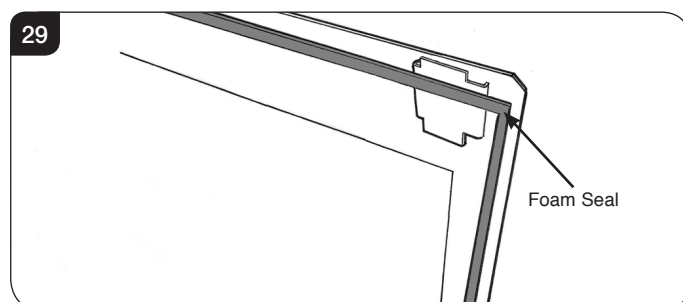
- 8.9 Position the appliance in the aperture, ensure that the appliance is level and that the front edge aligns with the proposed front edge of the wall.
- 8.10 Secure the appliance to the base of the studwork plinth using the fixing screws supplied, see Diagram 27.



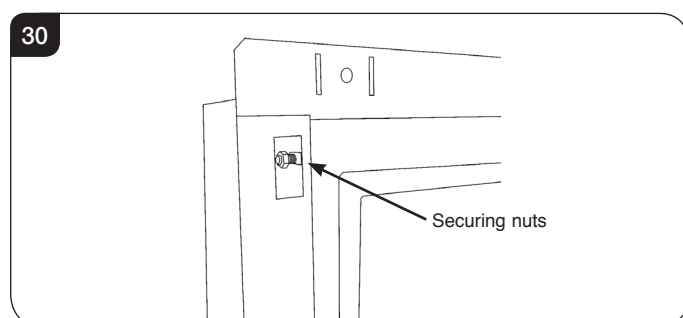
- 8.11 Fit non-combustible board to the studwork around the appliance. This should extend a minimum of 400mm above and at least 100mm to the sides of the appliance, leaving a minimum of 15mm gap either side of the appliance to allow clearance for the sub frame fixings, see Diagram 20.
- 8.12 Apply plasterboard to the remainder of the studwork.
- 8.13 Apply a plaster finish to the front of the chimney breast, ensuring that heat resistant plaster is used in the areas shown in Diagram 22.
- 8.14 Attach the 4 x frame fixing brackets to the sub-frame, see Diagram 28.



- 8.15 Fix foam seal to the rear of the outer flange of the appliance, see Diagram 29.



- 8.16 Fit the sub-frame to the appliance and ensure the returns of the sub-frame fit internally into the main outer box with the studs and securing nuts passing through the side slots. Secure by tightening the 4 nuts, see Diagram 30.



- 8.17 Secure the appliance to the studwork using four screws through flange, bracket and support bar.

Slips

Because of the high temperatures this appliance achieves, it is advisable to use marble slips or similar material between the appliance and the plasterboard.

Never use a one-piece slip as expansion (even cracking) can occur.

Note: If a slip is used, longer screws are needed to secure the appliance.

To finish this installation:

- 8.18 Connect the wall box and batteries following the instructions in Section 11.

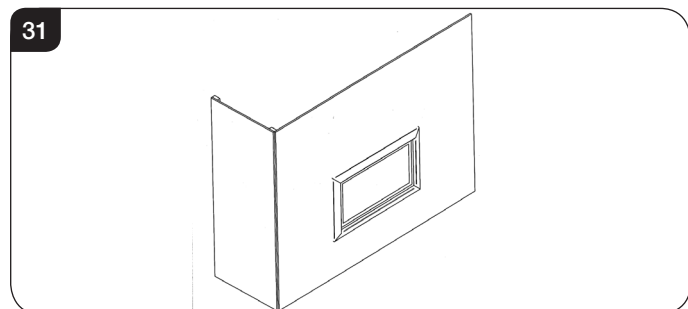
Installation Instructions

8.19 Connect:

- The flue system, see Installation, Section 4.
- Gas services, see Installation, Section 2, using the opening in the side of the chimney breast for access.

After commissioning:

8.20 Finish the sides of the chimney breast, see Diagram 31.

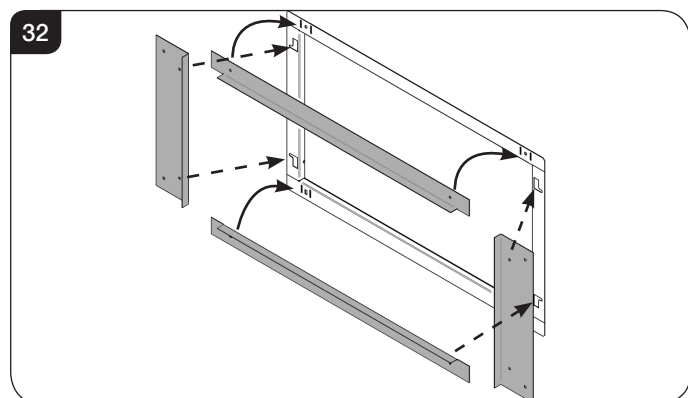


9. Studwork for Edge installation kit

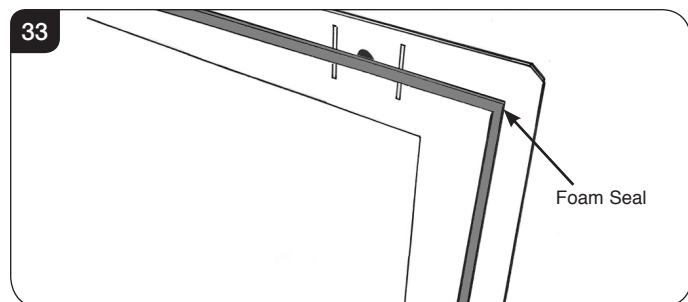
There is an optional Studio Edge Installation Kit available for installing the appliance without a frame: Studio Code No. 8727BFEK01.

Using the installation kit:

9.1 Fit the four metal brackets of the kit to the sub-frame, see Diagram 32.



9.2 Fix foam seal to the rear of the outer flange of the appliance, see Diagram 33.



9.3 Fit the sub-frame to the appliance and ensure the returns of the sub-frame fit internally into the main outer box with the studs and securing nuts passing through the side slots. Secure by tightening the 4 nuts, see Diagram 30.

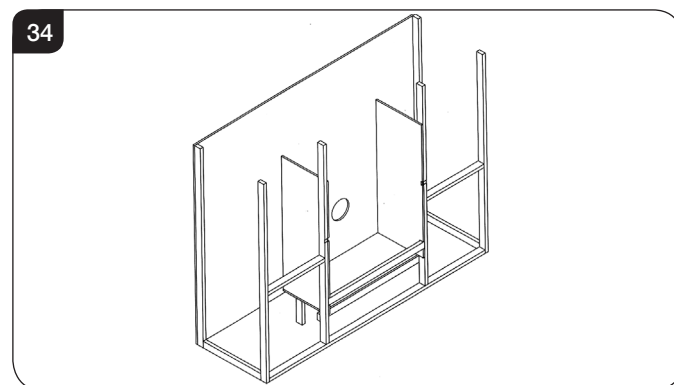
9.4 Build the studwork chimney breast to the desired size.

9.5 Ensure all clearances to combustible material are maintained, see Section 7.

9.6 Put vertical studwork at minimum clearance to the side of the appliance (50mm).

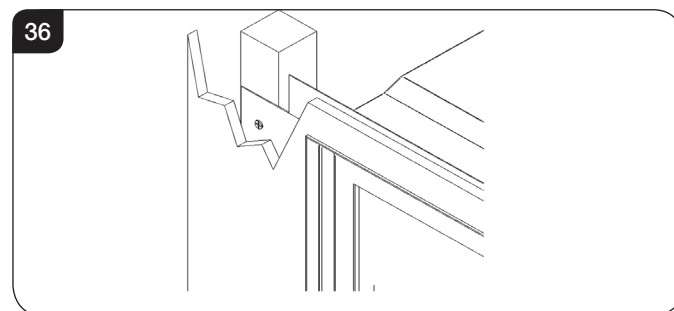
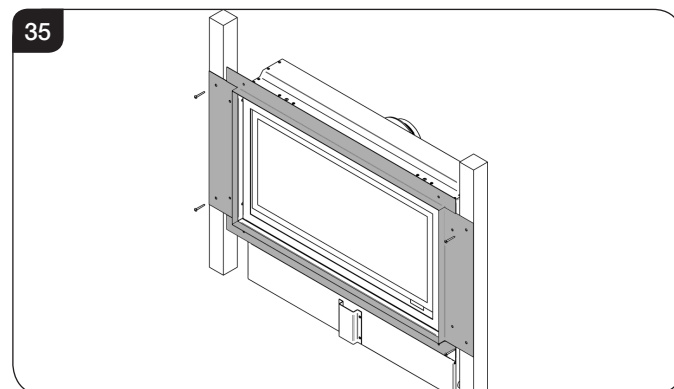
9.7 Decide on flue requirements.

9.8 Cut a hole for the flue exit, see Installation Instructions, Section 4.



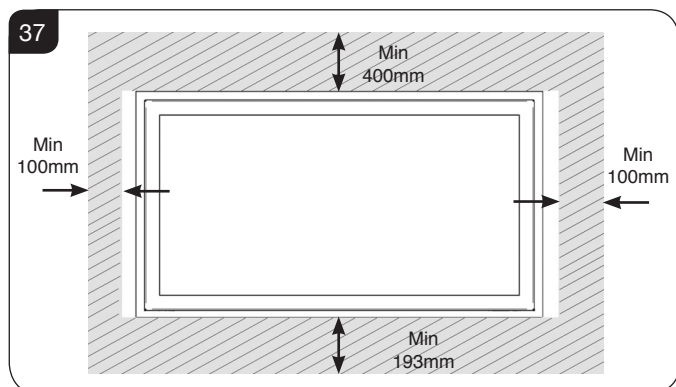
9.9 Secure to the vertical studwork through the holes in the metal brackets fitted to the appliance.

9.10 The kit has been designed so that non-combustible board can be taken right up to the edge of the four brackets, see Diagrams 35 & 36.

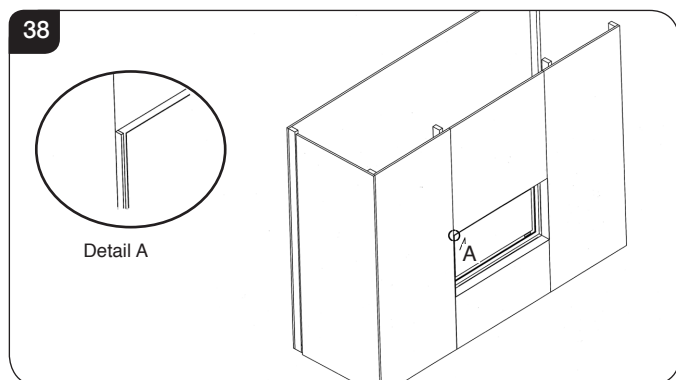


9.11 Fit non-combustible board to the studwork above the appliance. This should extend a minimum of 400mm above the appliance and 100mm to the sides, see Diagram 37.

Installation Instructions



- 9.12 Fit plasterboard to the remaining chimney breast front.
- 9.13 Connect the flue system and gas services using the opening in the side of the chimney breast for access.
- 9.14 After commissioning, finish the sides of the chimney breast, see Diagram 38.



- 9.15 Apply a plaster finish to the chimney breast using heat resistant plaster in the area directly around the appliance, see Diagram 22.

10. Studwork for Cool Wall installation kit

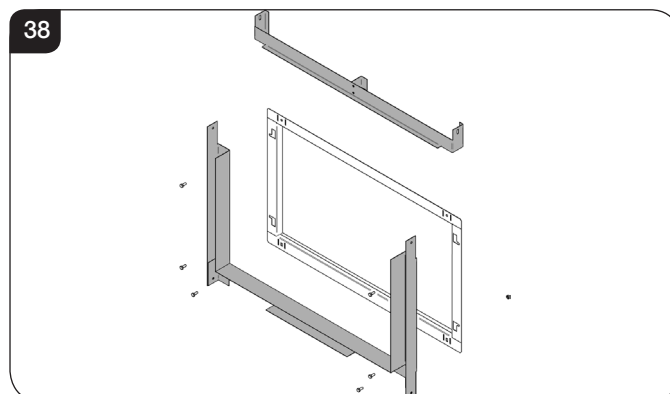
For this cool-wall installation, the convected heat produced by the appliance is channelled into the chimney cavity and vented at the top.

The cool wall installation kit is provided unfinished. This allows the kit to be finished to match the front face decor.

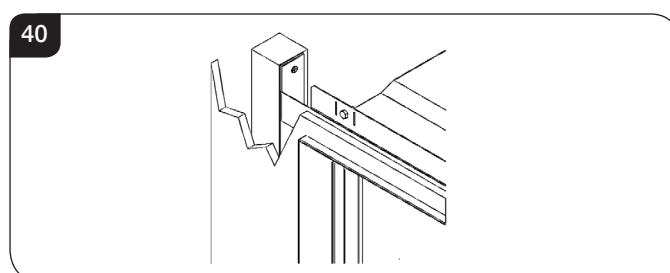
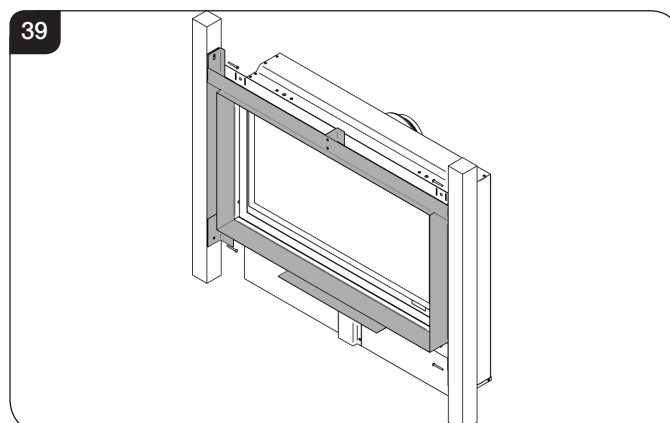
There is an optional Studio Cool Wall Installation Kit available for installing the appliance without a frame: Studio Code No. 8727BFCW01.

Using the fixing kit:

- 10.1 Fit the four metal brackets of the kit to the sub-frame, see Diagram 38. There is a deliberate gap at the top for convected heat.



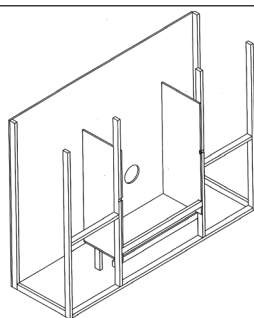
- 10.2 Fit the sub-frame to the appliance and ensure the returns of the sub-frame fit internally into the main outer box with the studs and securing nuts passing through the side slots. Secure by tightening the 4 nuts, see Diagram 30.
- 10.3 This now determines the width of your two vertical studwork supports. The kit has been designed so that non-combustible board can be taken right up to the edge of the four brackets, see Diagrams 39 & 40.



- 10.4 Fix the left and right metal brackets into the studwork. Build the studwork chimney breast to the desired size.
- 10.5 Ensure all clearances to combustible material are maintained, see Section 7.
- 10.6 Decide on flue requirements.
- 10.7 Cut a hole for the flue exit, see Installation Instructions, Section 4.

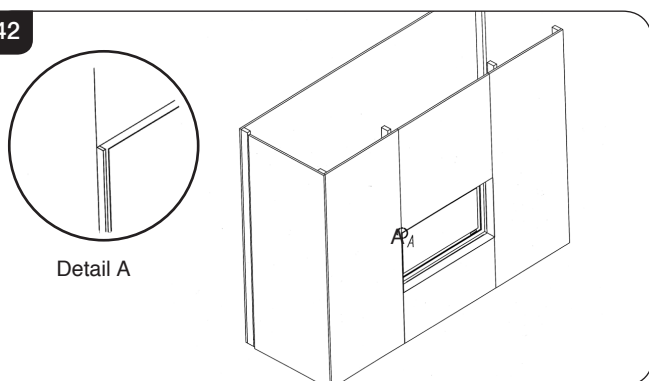
Installation Instructions

41



- 10.8 Fit non-combustible board to the studwork above the appliance. This should extend a minimum of 400mm above the appliance and 100mm to the sides, see Diagram 33.
- 10.9 Fit plasterboard to the remaining chimney breast front.
- 10.10 Connect the flue system and gas services using the opening in the side of the chimney breast for access.
- 10.11 After commissioning, finish the sides of the chimney breast, see Diagram 42.

42



- 10.12 The top of the chimney breast must have a minimum 200cm² vent.
- 10.13 Apply a plaster finish to the chimney breast using heat resistant plaster in the area directly around the appliance, see Diagram 22.

11. All types of installation - Wall Box & Batteries



Please note: As an optional extra Gazco can provide a mains adapter to supply constant power to the appliance control box instead of the battery pack.

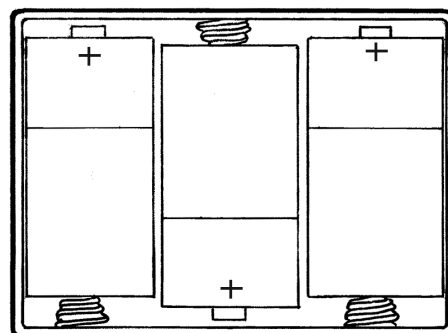
If installing an appliance with the adapter make provision for a mains power socket within 1.5m of the control box and follow the instructions provided.

- 11.1 Decide on the position for the wall box containing the batteries and wall switch.

A combined battery power supply and 3m touch control cable is supplied and pre-fitted to the appliance. When deciding the route of the cable consideration must be given to avoiding contact with the appliance and the flue system.

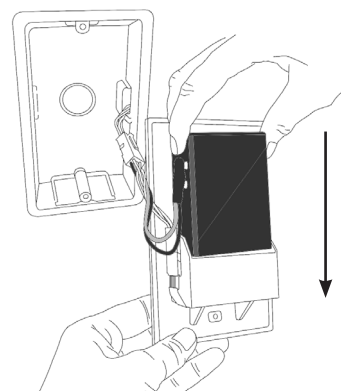
- 11.2 Correctly position the three new high quality (Duracell or similar) size C batteries into the battery holder. Replace the cover by sliding it on to the battery holder.

42



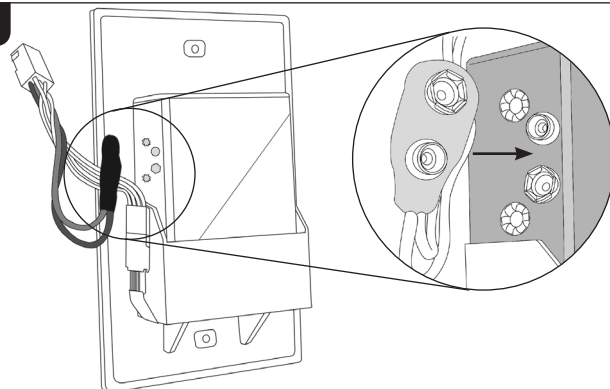
- 11.3 Slide the battery box into its housing in the back of the wall plate, see Diagram 43.

43

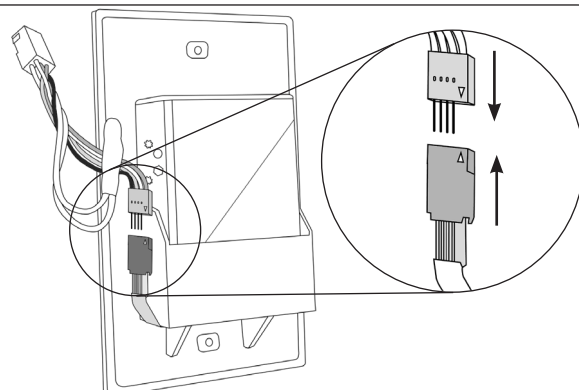


- 11.4 Ensure both sets of wires are connected, see Diagrams 44 & 44. **When replacing the 4 pronged connector ensure that the arrows are aligned.**

44

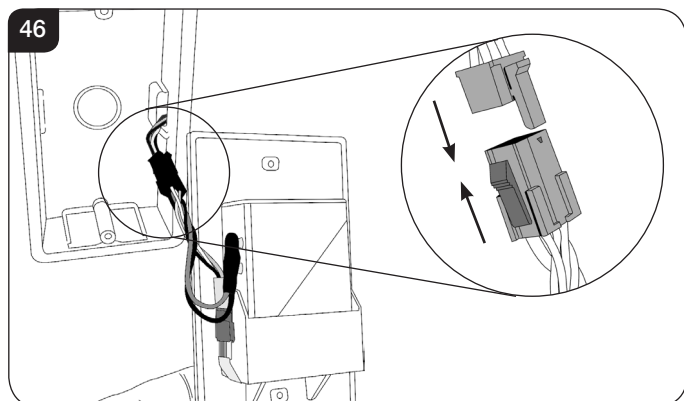


45



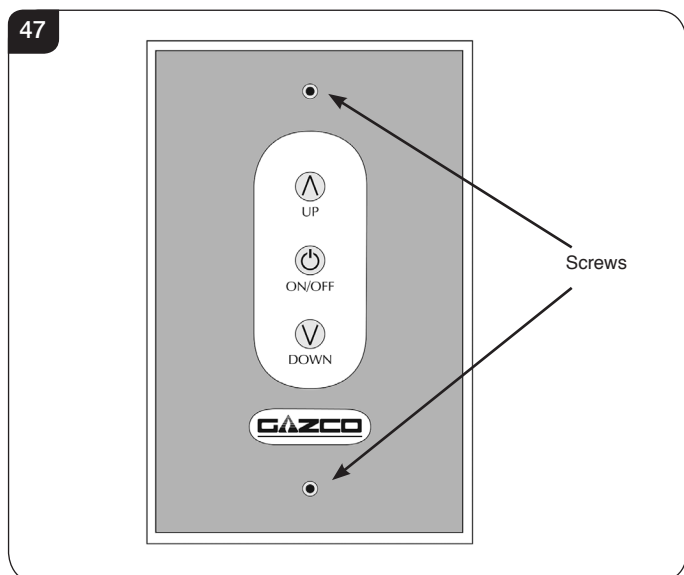
Installation Instructions

- 11.5 Connect the cable from the appliance to the touch pad cable, see Diagram 46.



- 11.6 **IMPORTANT: THE WALL SWITCH MUST BE INSTALLED USING THE PLASTIC DRY LINING BOX SUPPLIED.**

Secure the wall plate to the dry lining box with the 2 x screws provided, see Diagram 47.



PLEASE ENSURE NO WIRES ARE TRAPPED BEFORE REPLACING THE WALL PLATE. THE TOUCH PAD LEAD IS EASILY DAMAGED.

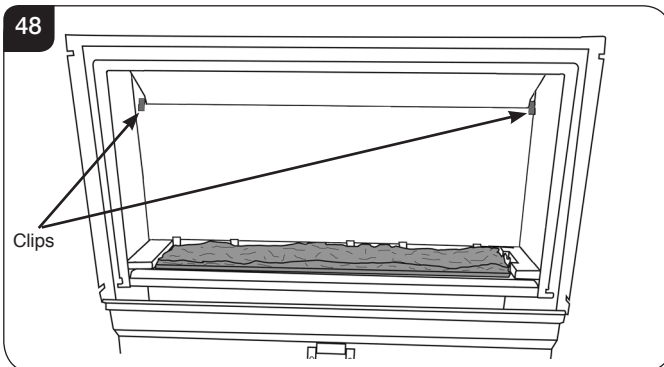
12. Assembling the Appliance

LINERS

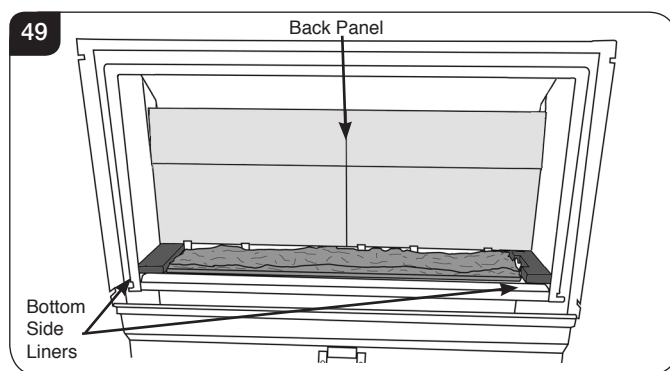
- 12.1 The Slimline Studio appliance has the option of three different liner finishes:

Vermiculite
Black Reeded
Brick Effect

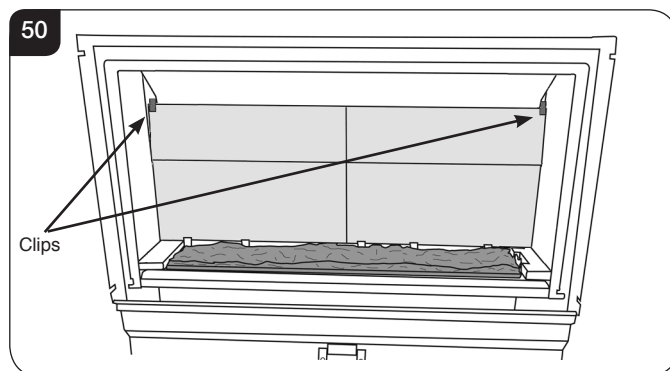
- 12.2 There are two clips at the top of the firebox that are used to secure the back panel in position. These must be removed before fitting the liners, see Diagram 46.



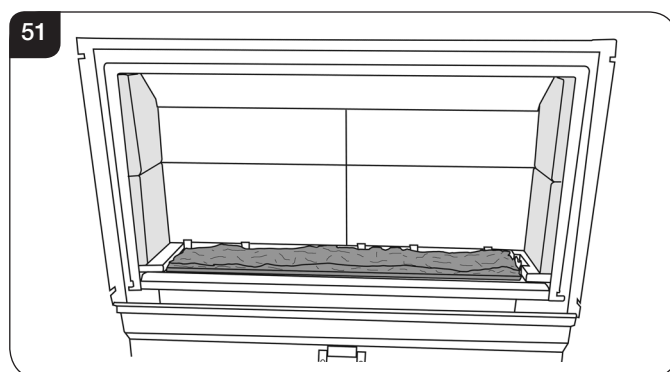
- 12.3 Place the Bottom Side Liners against the side and back of the firebox, then fit back liner panel into position against the back of the appliance, see Diagram 49.



- 12.4 Reattach the two clips to hold the back panel in place, see Diagram 50.



- 12.5 Slide the two side liners into place to finish, see Diagram 51.



- 12.6 Removal of the liners is the reverse of this process.

Installation Instructions

13. Arrangement of the fuel bed

Advice on handling and disposal of fire ceramics



The fuel effect and liners of this appliance are made from Refractory Ceramic Fibre (RCF), a material which is commonly used for this application.

Protective clothing is not required when handling these articles, but we recommend you follow normal hygiene rules of not smoking, eating or drinking in the work area and always wash your hands before eating or drinking.

To ensure that the release of RCF fibres are kept to a minimum, during installation and servicing a HEPA filtered vacuum is recommended to remove any dust accumulated in and around the appliance before and after working on it. When servicing the appliance it is recommended that the replaced items are not broken up, but are sealed within heavy duty polythene bags and labelled as RCF waste.

RCF waste is classed as stable, non-reactive hazardous waste and may be disposed of at a licensed landfill site.

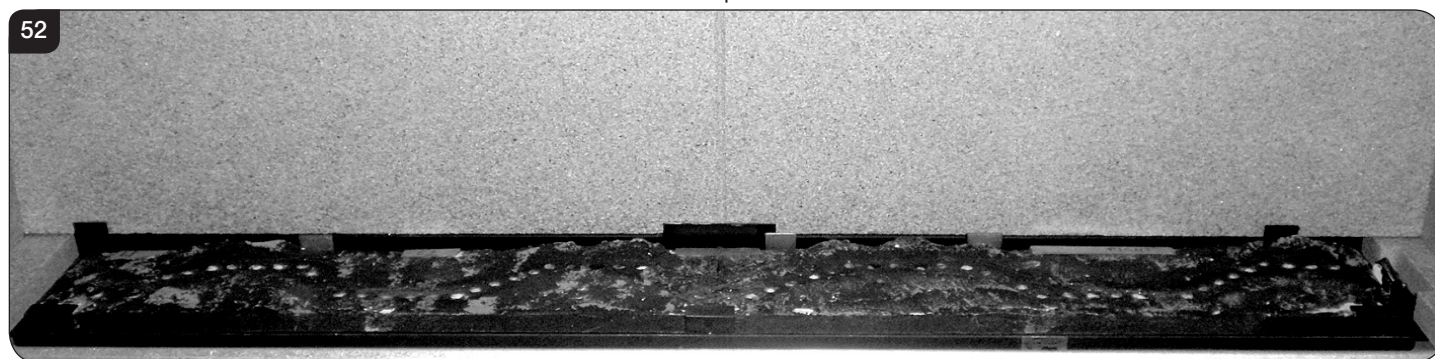
Excessive exposure to these materials may cause temporary irritation to eyes, skin and respiratory tract; wash hands thoroughly after handling the material.

14. Log Layout

LOGS MUST BE POSITIONED ACCORDING TO THE FOLLOWING INSTRUCTIONS TO GIVE THE CORRECT FLAME EFFECT

14.1 Ensure the burner tray is clean and free from any debris.

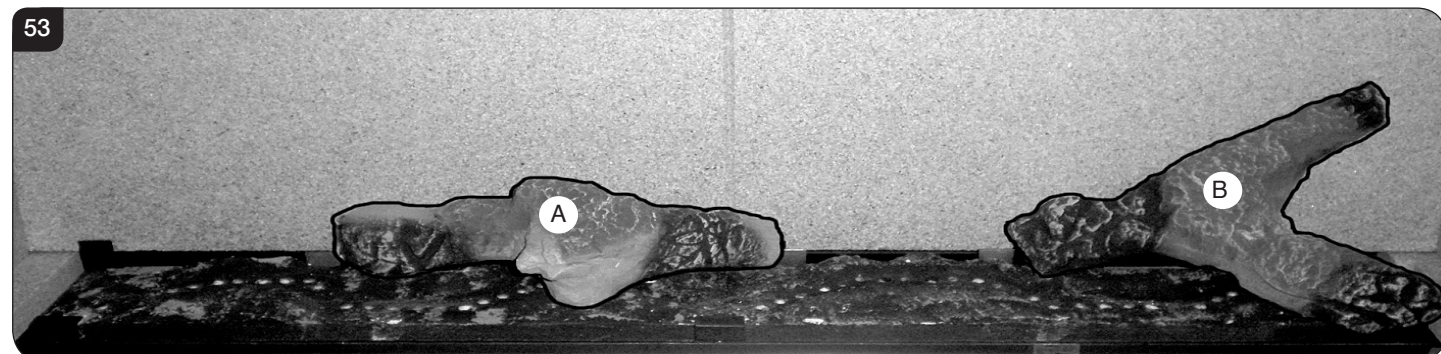
14.2 All logs can be identified by a letter (A - D) on their underside.



Installation Instructions

- 14.3 Position Log A between the two tabs at the back of the burner tray, see Diagram 53. Ensure that it is pushed back against the back panel.

- 14.4 Place the left hand end of Log B against the back right tab on the burner tray, see Diagram 53. Ensure that the front branch is in line with the front of the burner tray.

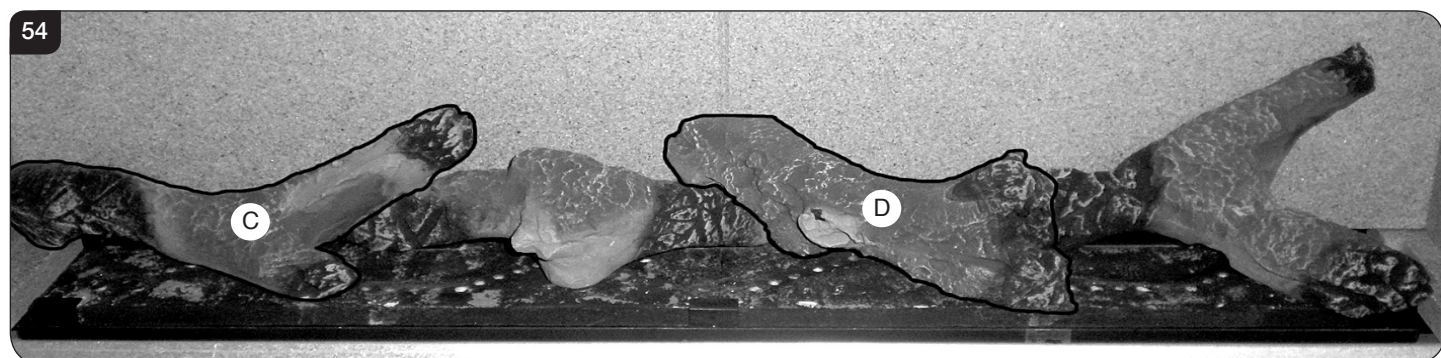


- 14.5 Rest the left end of Log C on the bottom left vermiculite panel in the back left corner, see Diagram 54.

The right end of Log C rests across Log A with the small front branch resting on the burner tray.

- 14.6 Engage the left hand end of Log D with the right hand end of Log A.

The right hand end of Log D fits against the metal stop on the front of the burner tray.



- 14.7 Separate the Embaglow material into smaller pieces and pull into shape to create a fine layer.

- 14.8 Place the pieces of Embaglow between the logs in the highlighted areas shown in Diagram 55. Ensure the material is placed loosely between the logs to create a random glow.

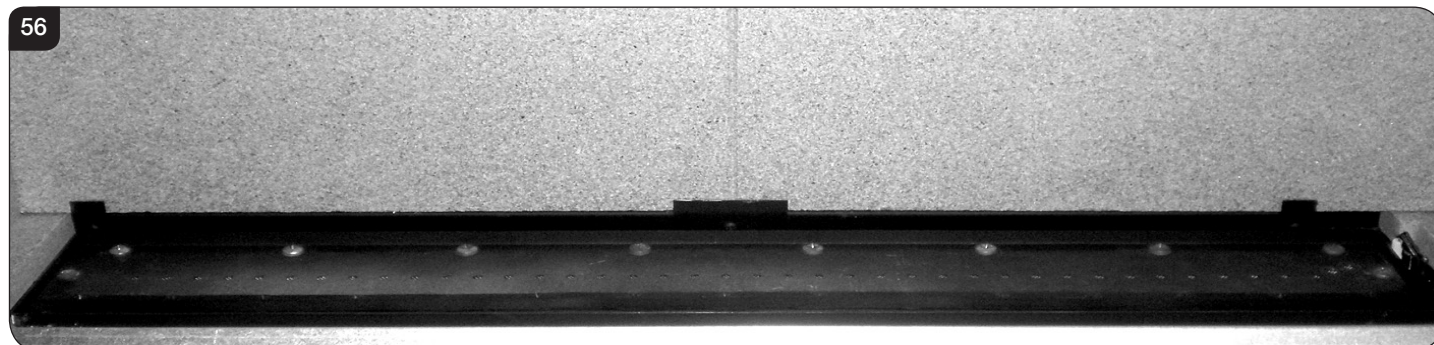


Installation Instructions

15. Stone/ Glass Fuel Effect Layout

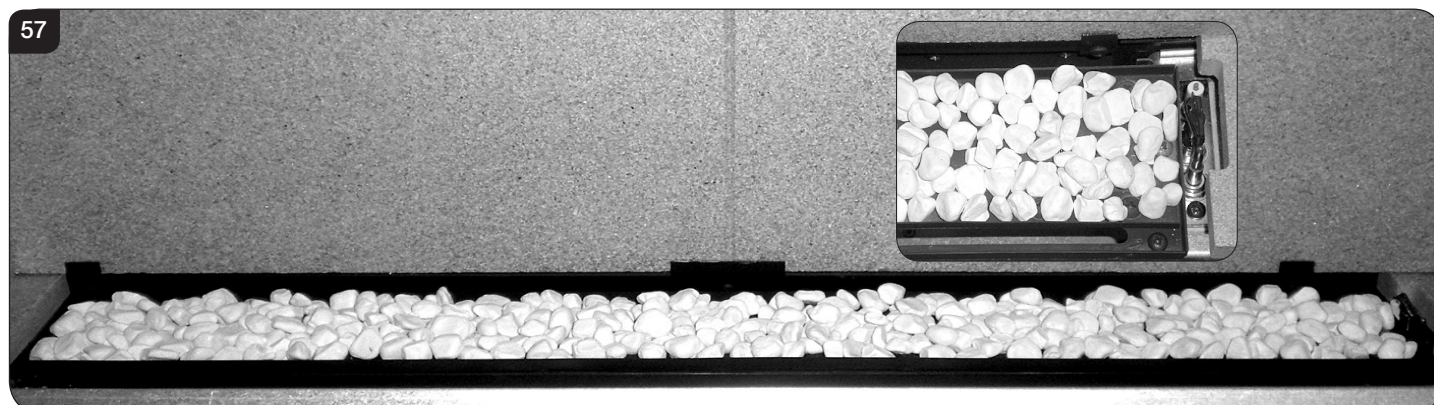
15.1 To use the white stone or glass granule fuel effect, apply according to the following instructions to give the correct flame effect.

15.2 Ensure the burner tray is clean and free from any debris, see Diagram 56.



15.3 Fill the tray making sure the effect is flattened so it is level with the rim of the tray. **DO NOT OVERFILL THE BURNER TRAY**, see Diagram 57.

TAKE CARE NOT TO SPILL EFFECT INTO THE PILOT AREA FRONT CHANNEL OR GAP AT REAR OF TRAY. ONLY GENUINE GAZCO PARTS CAN BE USED IN THIS APPLIANCE.



16. Completion of assembly

16.1 To fit the window frame keep the frame in the upright position with the locks uppermost.

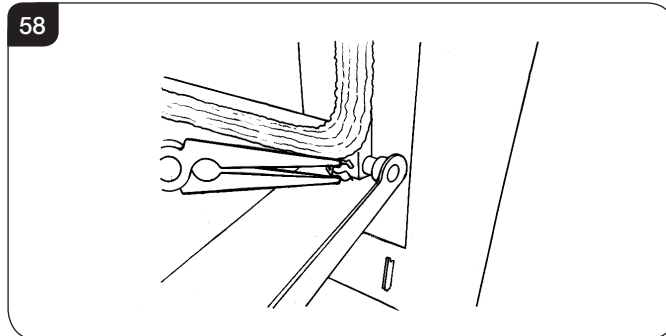
16.2 Offer the frame to the foot of the opening.

16.3 Slide the frame to the right to locate the right hinge pin.

16.4 Manoeuvre the frame up towards the left side to locate the left hinge pin.

16.5 Slide onto the hinge with a right movement.

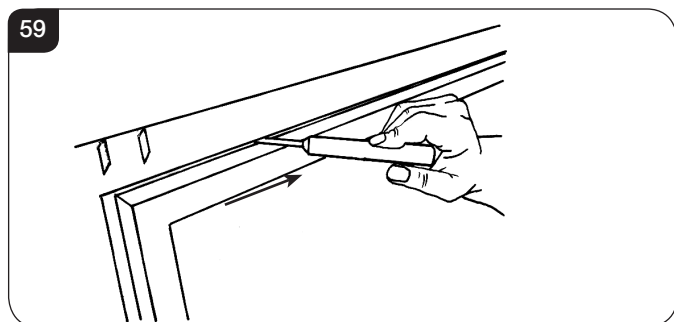
16.6 Secure in place with a spring clip at the right hinge pin, see Diagram 55.



16.7 Close the window.

Installation Instructions

- 16.8 Using the hexagon key provided close the window locks by moving from open to shut towards the window centre, see Diagram 59.

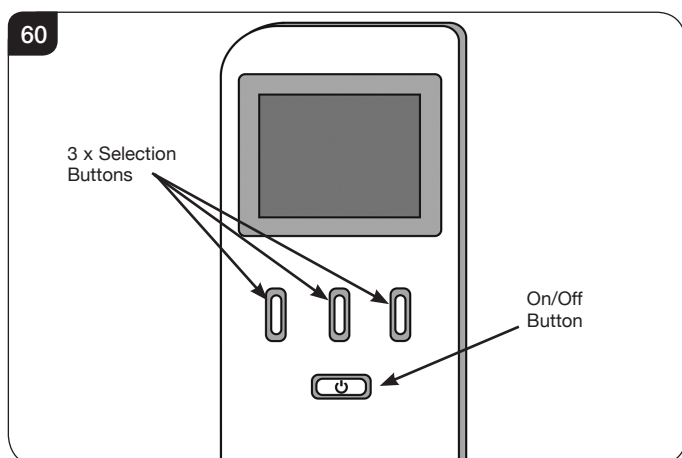


- 16.9 When closing the door ensure the door catches are fully engaged.



17. Operating the Studio

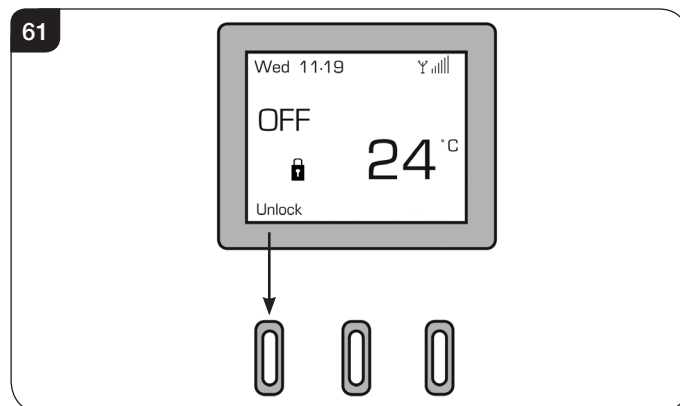
- 17.1 The appliance has 4 flame settings:
1. High.
 2. Medium.
 3. Low.
 4. Standby (Pilot only).
- 17.2 Both touch pad and handset allow you to manually switch between flame settings.
- 17.3 The Thermostatic handset also allows to set the appliance to automatically regulate the room temperature.



Before using the remote control:

- 17.4 If there is no display on the LCD screen press any key.
- 17.5 When first powered, the handset displays the OFF screen. The handset may be locked as indicated by the padlock symbol (🔒), see Diagram 61.

NOTE: To select a function from the options displayed at the bottom of the screen press the button directly below the desired function.



- 17.6 To unlock the handset select Unlock followed by OK - the symbol will change to an open padlock (🔓).
- 17.7 There are 3 different modes available for controlling and operating the appliance for full operating details see Section 2, User Instructions.

When a command from the handset is received a beep will sound and the LED on the handset will briefly illuminate.

NOTE: The LED flashes every 4 seconds to show that it is communicating with the appliance. After each command has been accepted the LED will cease flashing until the command has been carried out. Wait until the LED resumes flashing before giving another command.

Manual Mode

Switching the Appliance ON:

- 17.8 To light the appliance press the On/Off (🔌) button, this will bring up the LCD screen. Select the 'On' option on the left of the screen immediately followed directly by the OK button, a single beep will sound.

After the start up cycle has completed the appliance will light on the high flame setting (this can take up to 20 seconds).

Select the 'Manual' option on the screen to control the appliance.

Decreasing the Flame Height:

- 17.9 From the high flame setting press DOWN (↓) once to lower the flame to the medium setting.
- 17.10 From the medium flame setting press DOWN (↓) once to lower the flame to the low setting.
- 17.11 From the low flame setting press DOWN (↓) once to put the appliance in Standby mode (Pilot only).

Increasing the Flame Height:

- 17.12 To light the appliance when it is in Standby mode press UP (↑) once. The appliance will light on the **Low** flame setting.

Installation Instructions

- 17.13 From the low setting press UP (↑) once to increase the flame setting to medium.
- 17.14 From the medium setting press UP (↑) once to increase the flame setting to high.



WARNING: IF THE APPLIANCE FAILS TO LIGHT OR BECOMES EXTINGUISHED IN USE, WAIT 3 MINUTES BEFORE ATTEMPTING TO RELIGHT.



IMPORTANT: YELLOW FLAMES TYPICALLY APPEAR WHEN THE APPLIANCE HAS REACHED NORMAL OPERATING TEMPERATURE. THIS CAN TAKE UP TO 30 MINUTES.

Switching the Appliance OFF:

- 17.15 To switch the appliance OFF press the On/Off (⏻) button once, see Diagram 60.

FOR FULL OPERATING INSTRUCTIONS AND TROUBLESHOOTING SEE USER SECTION.

15. Touch Pad Control

62



The touch pad control is located on the front of the wall switch and allows manual operation of the appliance, see Diagram 62.

With the touch pad it is possible to turn the appliance ON, OFF and control the flame setting.

NOTE: When using the touch pad buttons a beep will be emitted from the appliance to indicate an accepted command.

Lighting the appliance

- 15.1 Press the On/Off button once.

If the pilot fails to light, press the ON/OFF button to switch OFF. Wait for at least 30 seconds before attempting to relight.

- 15.2 After the start up cycle has completed the appliance will light on the **high flame setting** (this can take up to 20 seconds).

If the appliance is in Standby mode, pressing the UP (↑) button will cause the main burner to ignite on the **Low** flame setting.

- 15.3 To increase the flame height press the UP (↑) button.

- 15.4 To decrease the flame height press the DOWN (↓) button.

- 15.5 When on the lowest flame setting pressing the Down (↓) button will switch the appliance to Standby mode (pilot only).



WARNING: IF THE APPLIANCE FAILS TO LIGHT OR BECOMES EXTINGUISHED IN USE, WAIT 3 MINUTES BEFORE ATTEMPTING TO RELIGHT.



IMPORTANT: YELLOW FLAMES TYPICALLY APPEAR WHEN THE APPLIANCE HAS REACHED NORMAL OPERATING TEMPERATURE. THIS CAN TAKE UP TO 30 MINUTES.

To Switch the Appliance OFF:

- 15.6 To turn the appliance **OFF** press the On/Off button once.

Touch Pad Control Not Working

If the appliance is not operating with the touch pad control:

- 15.7 Replace the batteries in the wall switch unit, see Section 6, User Instructions.
- 15.8 If the appliance still fails to operate consult your installer or Gazco retailer.

Commissioning

1. Commissioning

- 1.1 Complete the Commissioning Checklist at the front of this manual covering:

- Flue checks
- Gas checks
- Log/fuel effect layout - flame picture

For working pressure test, use the access panel at the gas connection ensuring the burner is in position. Refer to Replacement Parts, Section 17.

- 1.2 Upon completion of the commissioning and testing of the installation and correct operation of the appliance, the installer must instruct the user how to operate the appliance.
- 1.3 Guide the user through the User Instructions paying particular attention to:
- a) Regular servicing (Section 13 of the User Instructions).
 - b) Ventilation (Section 14 of the User Instructions) - point out the ventilation positions where applicable.
 - c) Hot surfaces (Section 16 of the User Instructions).
 - d) How the appliance works with the touch pad control (Section 5 of the User Instructions).
 - e) How the appliance works with the remote control handset and the modes of operation (Section 2 of the User Instructions).
 - f) How to change settings in the auto mode and program modes of operation.
 - g) What to do if the appliance fails to operate (Section 17 of the User Instructions).

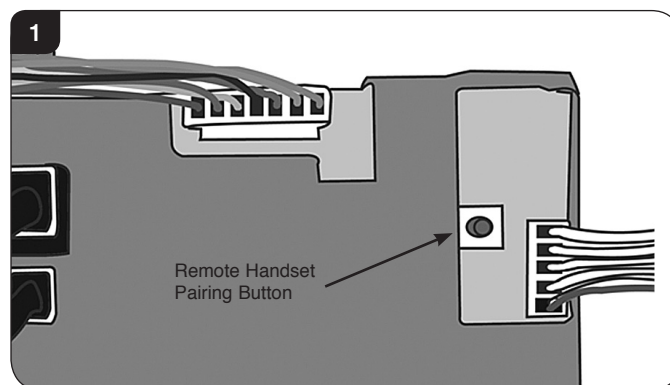
2. Pairing the appliance

If there is no communication between the remote control and the appliance after replacing the control box or the handset, it will be necessary to pair the two together.

Before starting the pairing process ensure the handset is programmed to Channel 'C' see Section 3.

- 2.2 Ensure batteries are fitted and working in the handset.
- 2.3 Check all leads and cables are connected correctly.
- 2.4 Ensure the handset is unlocked. To unlock the handset select Unlock followed by OK - the symbol will change to (□).
- 2.5 Press the ON/OFF button (⏻) on the handset and keep it depressed until the screen changes to the configuration menu. This may take up to 30 seconds and the screen may go blank before changing to the configuration screen.

- 2.6 When the configuration menu screen appears change the Pairing option to ON using the Change button.
- 2.7 Within 20 seconds press the yellow button on the control unit repeatedly until a single beep is heard confirming the pairing operation has been successful, see Diagram 1. This may be easier using a pencil, ball point pen or similar.



- 2.8 The remote handset will display a signal level in the top right hand corner. This may take up to 4 minutes.
- 2.9 Press the back button on the handset to return to the configuration menu and then again to return to the main menu.

3. Changing channel



WHEN ATTEMPTING A NEW PAIRING PROCEDURE THE HANDSET SHOULD BE SET TO CHANNEL 'C'. IF THE APPLIANCE IS ALREADY SET TO CHANNEL 'C' BUT NO COMMUNICATION SIGNAL STRENGTH IS SHOWN ON THE HANDSET, IT WILL BE NECESSARY TO CHANGE THE COMMUNICATION CHANNEL USING THE FOLLOWING PROCEDURE.

- 3.1 Ensure the handset is unlocked. To unlock the handset select Unlock followed by OK - the symbol will change to (□).
- 3.2 Press the ON/OFF button (⏻) on the handset and keep it depressed until the screen changes to the configuration menu. This may take up to 30 seconds and the screen may go blank before changing to the configuration screen.
- 3.3 Press the button below the down arrow (↓) to scroll through the menu until 'Channel' is displayed.
- 3.4 The channel is normally pre-set to C. Press the button below 'Select' and then use the down arrow (↓) to set the handset to channel A or B.
- 3.5 Disconnect the batteries from the control box and reconnect after 10 seconds.
- 3.6 The remote handset will display a signal level in the top right hand corner. This may take up to 4 minutes, check the strength of the signal

Servicing Instructions

Servicing/Fault Finding Charts

1. Servicing Requirements

IMPORTANT – The glass panel on this appliance should be checked for any signs of damage on the front face of the glass panel (scratches, scores, cracks or other surface defects). If damage is observed, the glass panel must be replaced and the appliance must not be used until a replacement is installed. Under no circumstances should the appliance be used if any damage is observed. Please isolate the appliance until a replacement glass panel has been obtained and installed. Replacement glass panels can be purchased from Gazco via the retailer from which the appliance was purchased or any other Gazco distributor.

This appliance must be serviced at least once a year by a competent person.

All tests must be carried out in accordance with the current Gas Safe recommendations.

1.1 Before Testing:

- Conduct a gas soundness test for the property ensuring there are no leaks before servicing.
- Check the operation of the appliance before testing.

1.2 Special checks:

- Clean the burner using a vacuum cleaner with a soft brush attachment. Ensure all debris is removed from the burner ports.
- Clean away lint or fluff from the pilot.
- Clean away lint or fluff from under the burner.
- Check the spark gap on the pilot is correct.

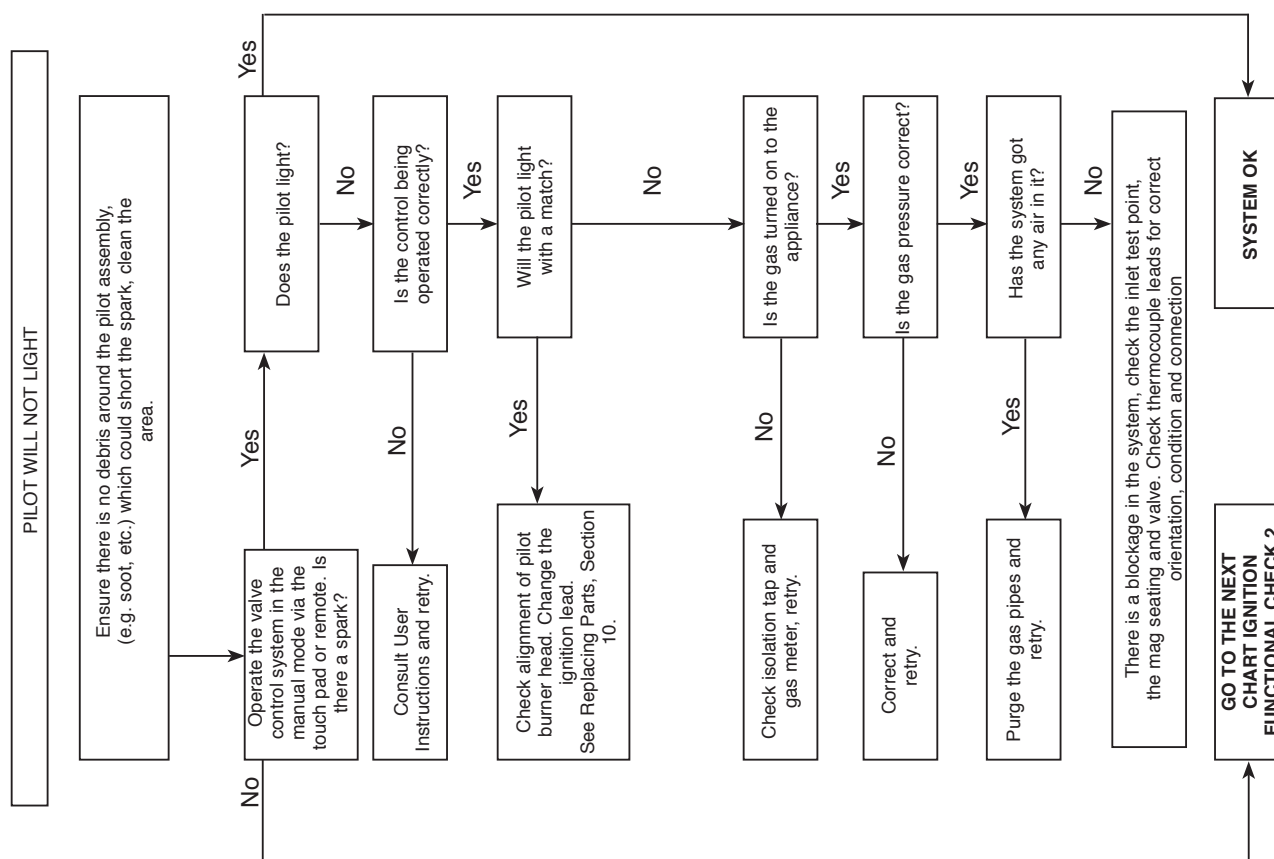
1.3 Correct any faults found during the initial test.

1.4 Re-commission the appliance in accordance with Commissioning Procedures of these instructions.

1.5 Advise the customer of any remedial work undertaken.

REPLACE BATTERIES BEFORE ATTEMPTING TO RECTIFY ANY FAULTS.

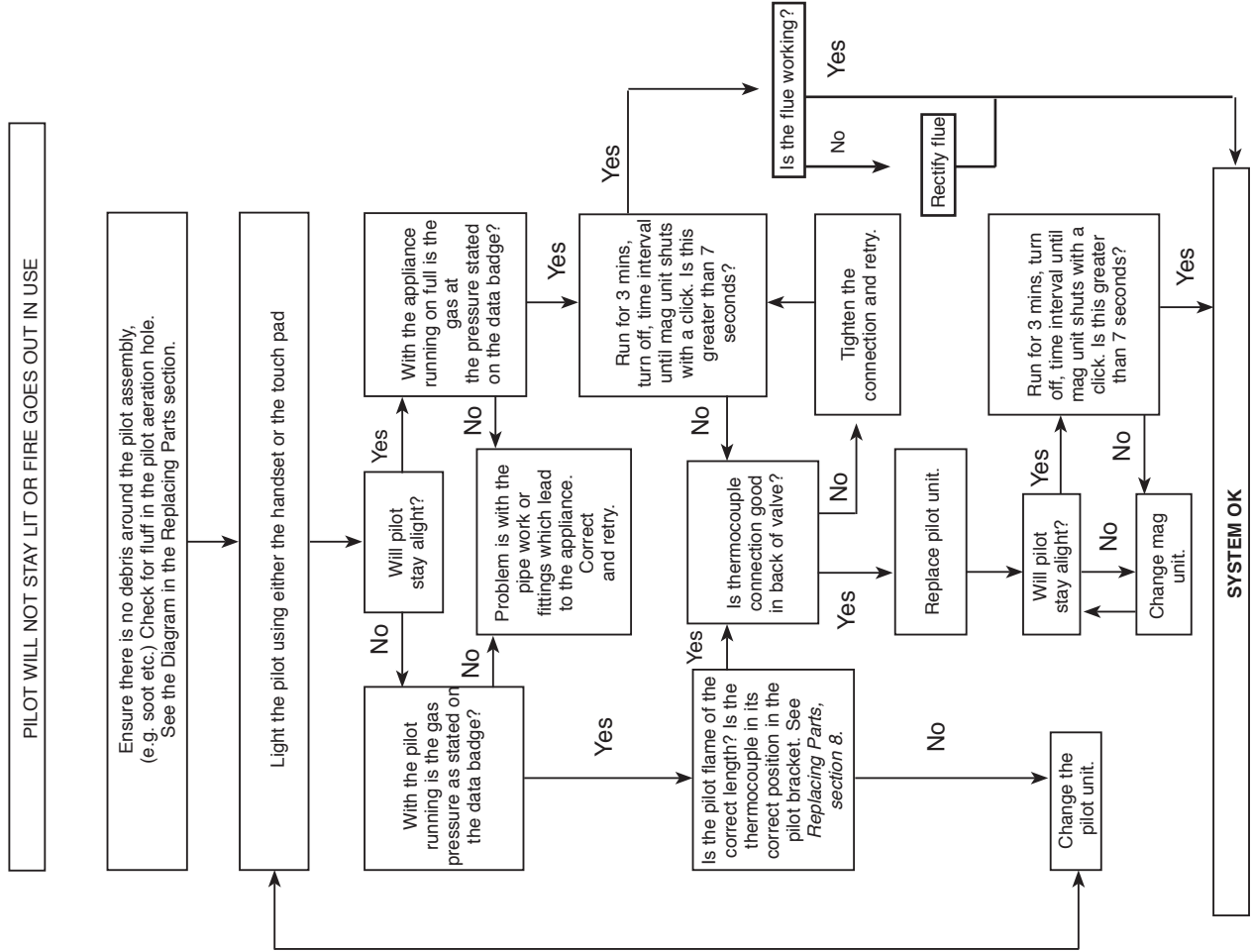
IGNITION FUNCTIONAL CHECK 1



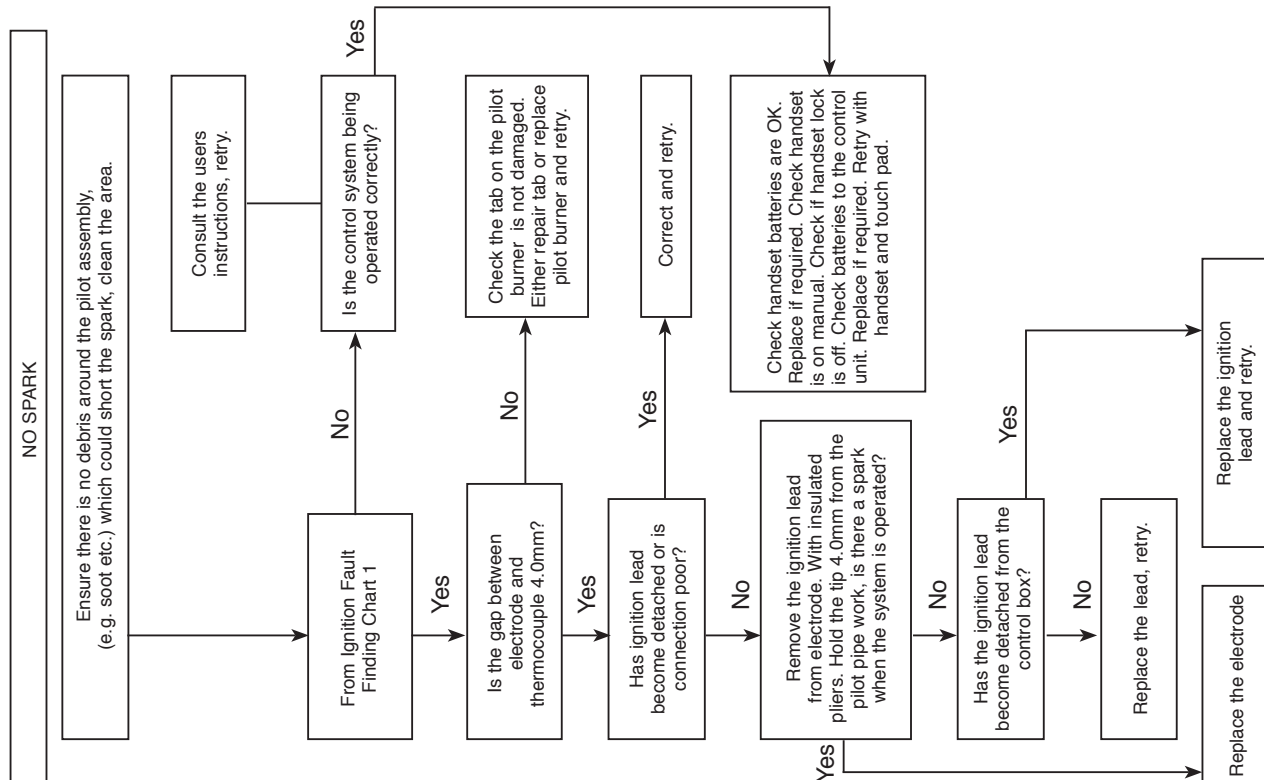
Servicing Instructions

Fault Finding Charts

FLAME FAILURE FUNCTIONAL CHECK 3



IGNITION FUNCTIONAL CHECK 2



Servicing Instructions

Fault Finding Charts

ELECTRONIC CONTROL VALVE FAULT ANALYSIS

Problem	Cause	Error Message	LCD Display	Solution
Does not ignite	No batteries or flat batteries in battery box	10 beeps	BATTERY ERROR	Place new batteries in battery box
	ROM error	2 cycles of 3 beeps	ROM ERROR	Change control unit
	Support test error	2 cycles of 5 beeps	SUPPORT ERROR	Connect earth cable from control box to valve
	Bad reception of remote handset signal			Change batteries in the remote handset
				Check the reception of signal from a shorter distance
				Try pairing again
	No response to touch control buttons	If LED is continuously on, the cable is connected the wrong way round		Try changing the channel in the configuration menu
				Ensure the touch control cable is correctly connected (see installation manual)
Sparks but no pilot ignition	Cable loose or broken or connected wrong way round			Change touch control
	Supply cable to valve disconnected or broken	2 cycles of 5 beeps	SUPPORT ERROR	Reconnect or replace valve cable
	Ignition cable disconnected or broken			Connect ignition cable
Pilot ignites but does not stay on	Gas valve supply off or no gas			Check gas installation. Open gas valve
	Valve cable disconnected or broken			Connect valve cable correctly
	Interrupter cable disconnected or broken			Connect correctly or replace pilot cable
Ignites from remote handset but not from touch pad	Pilot is not warmed up			Check pilot flame and verify that it heats the pilot
	Interrupter cable badly connected			Change polarity of pilot cable
	Interrupter cable disconnected or broken			Connect pilot cable
Ignites from touch pad but not from remote	Touch control cable disconnected or broken			Connect or replace touch control cable
	Defective touch control buttons			Change touch control
Switches off after 6 seconds	Bad communication with handset			Check batteries in handset
				Check reception of signal from a shorter distance
				Try pairing again
				Try changing the channel in the configuration menu
Switches off after 6 seconds	Short circuit in touch control	5 beeps	BUTTON ERROR	Change touch control wiring
Low batteries on remote			Low battery	Change the batteries in the remote
Appliance switches off		2 cycles of 3 beeps	CONFIG ERROR	Change control unit
		2 cycles of 3 beeps	EEPROM ERROR	Try pairing again
				Change control unit
	Loss of communication between appliance and remote for 18min	20 beeps		The remote is too far from the appliance
				Replace batteries in handset
	High temperature on control unit	1 long beep	TEMP ERROR	If this occurs more than once call the technical service
	Ambient temperature higher than configured		Over Temperature	Check the correct configuration of safety temperature

Servicing Instructions - Replacing Parts

1. General

- 1.1 All main components can be replaced without removing the appliance from its installation.

IT IS ESSENTIAL THAT THE GAS SUPPLY TO THE APPLIANCE IS TURNED OFF AT THE ISOLATION DEVICE BEFORE PROCEEDING FURTHER.

- 1.2 **DISCONNECT BATTERIES BEFORE SERVICING THE APPLIANCE.**

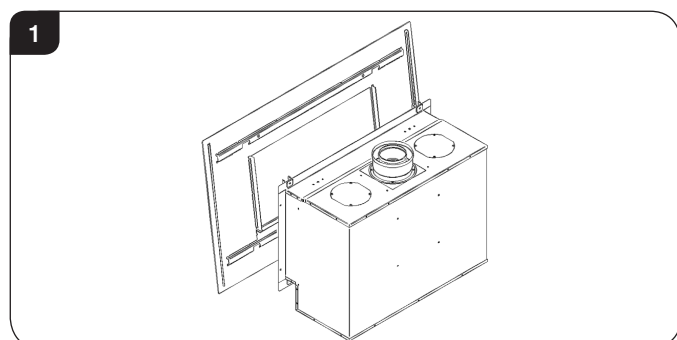
Removal of Flue

- 1.3 **If, for any reason, the flue has to be removed from the appliance, the seal must be replaced in the inner spigot.**
- 1.4 Access to the controls is restricted and the whole control assembly must be removed as one unit, see Section 8.

2. Decorative Frame

The same method is used to remove each frame.

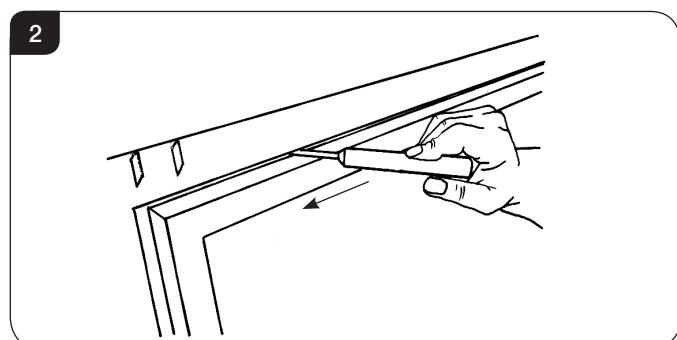
- 2.1 Lift the frame upwards off the four support brackets, see Diagram 1.



NOTE: THE STEEL FRAME IS HEAVY. TAKE CARE WHEN LIFTING.

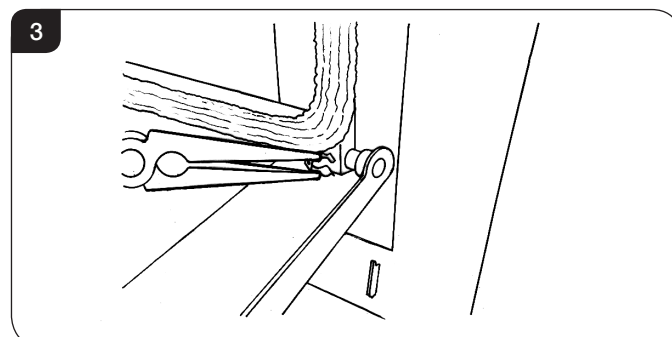
3. Window Frame Assembly

- 3.1 To open the glass door use the hexagon key provided.
- 3.2 Release the window locks by moving them from shut to open towards the outer edges, see Diagram 2.



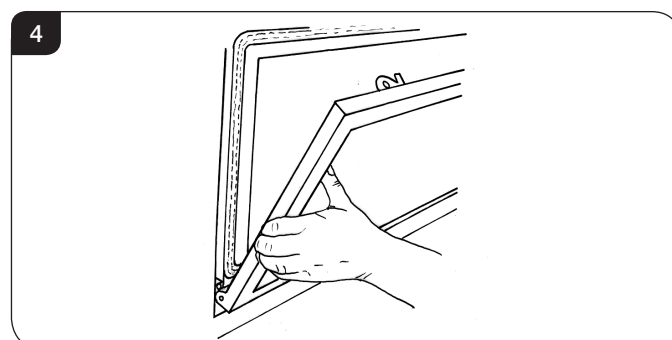
To completely remove the glass front:

- 3.3 Remove the securing spring clip from the bottom-right of the window frame, see Diagram 3.



- 3.4 With the window frame in an upright position slide the frame to the left so that it comes off the left hinge pin.

- 3.5 Still keeping the frame upright drop the left side down and forward slightly, see Diagram 4.



- 3.6 Slide the frame to the right so it comes off the right hinge pin. The window frame should now be free.

- 3.7 Refit in reverse order.

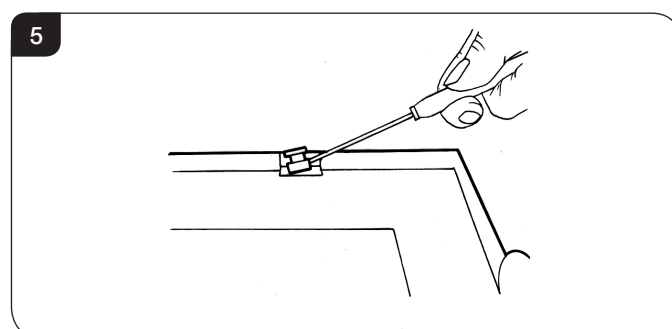
- 3.8 **When closing the door ensure the door catches are fully engaged.**



UNDER NO CIRCUMSTANCES SHOULD THE APPLIANCE BE USED WITHOUT THE CATCHES HOLDING THE DOOR IN PLACE.

4. Glass Window

- 4.1 Remove the two clips and brackets from either side of the frame, see Diagram 5.



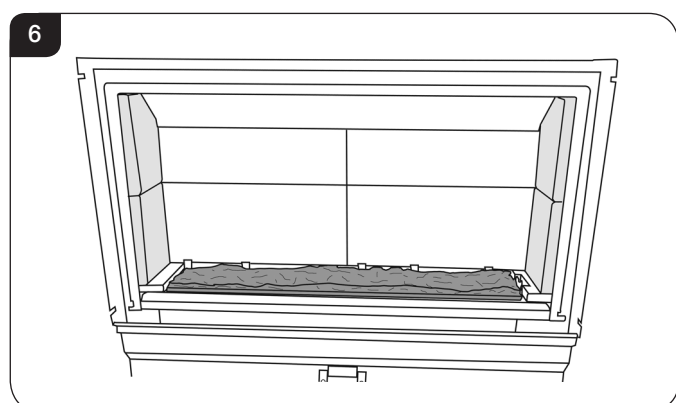
- 4.2 Lift the glass clear from the lock bracket at the top of the frame and slide out.

5. Removal & Fitting of the Liners

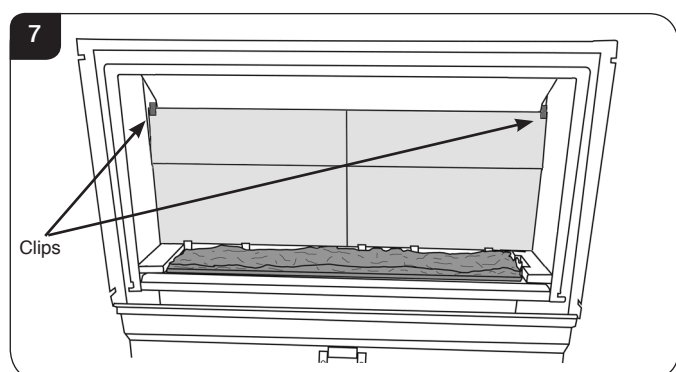
- 5.1 The Slimline Studio appliance comes with 3 optional liner finishes:

Vermiculite
Black Reeded
Brick Effect

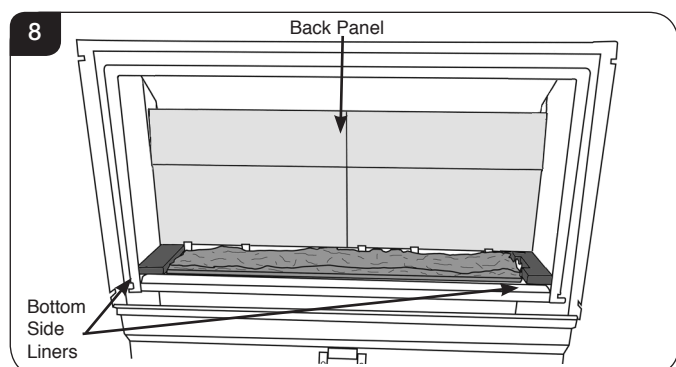
- 5.2 Slide the two side liners forward until clear of the appliance, see Diagram 6.



- 5.3 Remove the two clips holding the back panel in place, see Diagram 7.



- 5.4 Remove the back panel then the two Bottom Side Liners, see Diagram 8.

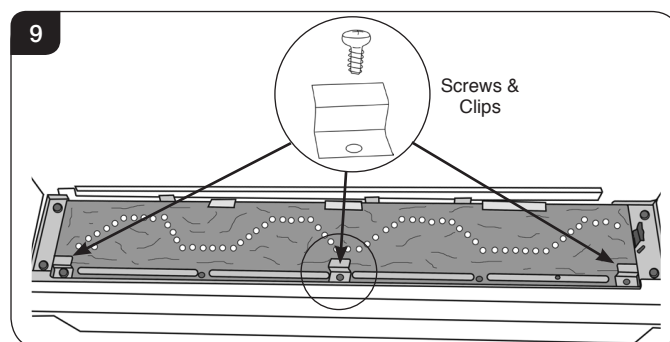


- 5.5 Replace the liners in reverse order.

6. Main Burner

To replace the main burner:

- 6.1 Remove the fuel effect from the burner.
6.2 Remove the 3 burner securing screws and clips from the front of the burner, see Diagram 9.



IMPORTANT

When replacing the main burner make sure that the clips are replaced with screws.

- 6.3 Lift the burner up and out of the appliance.
6.4 Refit in reverse order, ensuring the venturi engages with the main injector.
6.5 When refilling the stone chippings, fill to the level of the rim of the burner tray and flatten level.

Ensure no stone chippings fall into the air slots at the front of the burner.

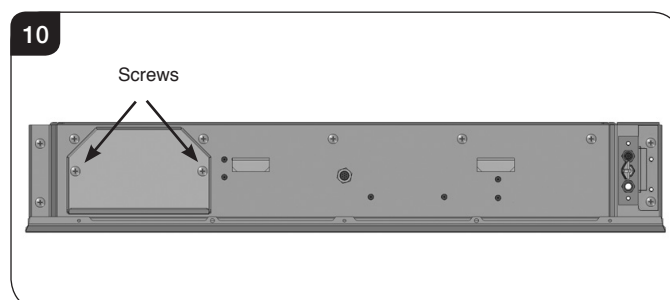
7. Main Control Assembly

- 7.1 To access the main control assembly first remove:

- The decorative frame
- Window frame
- Liners
- Main burner

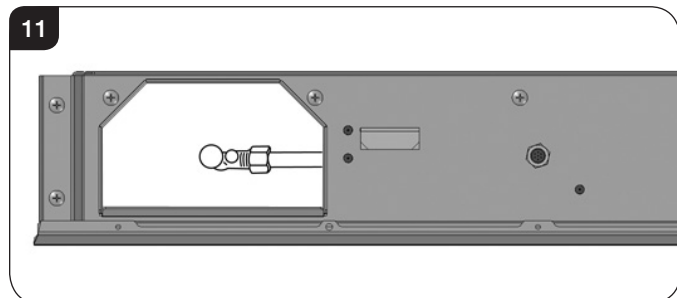
To remove the access panel:

- 7.2 Undo the two screws, see Diagram 10.
7.3 **Note the orientation of the access panel with the return edges facing forward.**

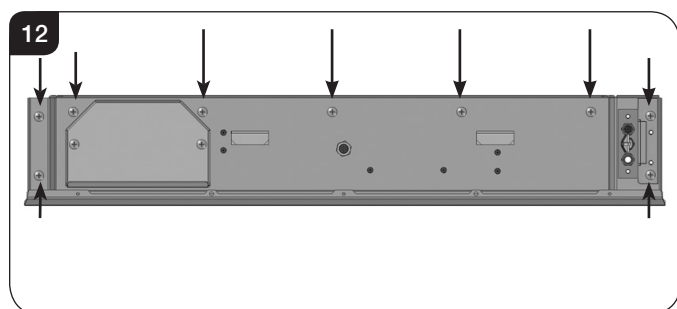


Servicing Instructions - Replacing Parts

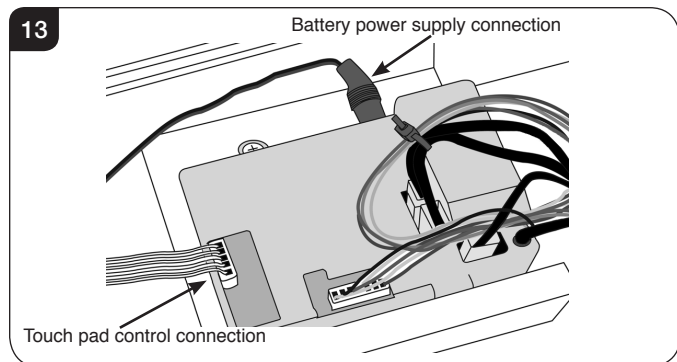
- 7.4 Isolate the gas supply at the isolation device and disconnect the gas inlet, see Diagram 11.



- 7.5 Remove the nine screws securing the control assembly, see Diagram 12.



- 7.6 The control assembly can now be lifted up and out of the appliance.
- 7.7 Disconnect the battery supply cable and the touch pad control cable from the control unit.



- 7.8 Reassemble in reverse order.
Note: Ensure no wires are trapped when replacing the assembly and that the foam seal is fully intact.

Replace the front two screws first, finger tight.
IMPORTANT: DO NOT CROSS THREAD.

It may be necessary to place a screwdriver through one of the central holes in order to align the fixing holes.

8. Pilot Unit Assembly

The pilot assembly consists of four components which can be individually changed:

- 8a) Pilot burner bracket.
- 8b) Electrode
- 8c) Pilot Injector
- 8d) Thermocouple.

- 8.1 Before commencing work on the pilot the Main Control Assembly must be removed, see Section 8.

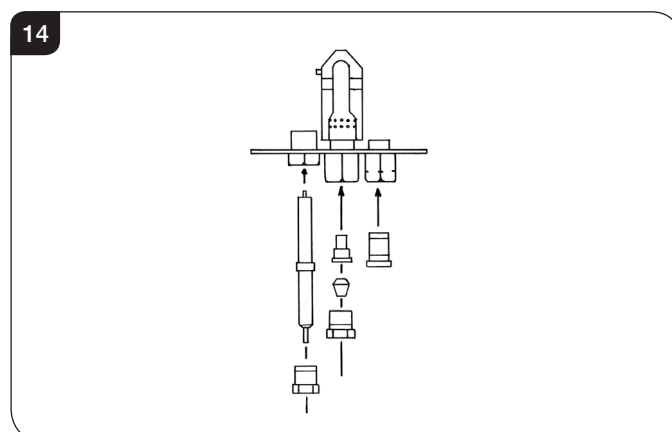
8a Pilot Burner Bracket

To remove the Pilot Burner Bracket:

- 8.2 **First remove the electrode, pilot pipe and thermocouple see Sections 8b, 8c & 8d.**
- 8.3 Remove the two screws securing the bracket. The pilot burner bracket can now be removed.
- 8.4 Check the pilot gasket and if damaged, replace with a new one.
- 8.5 Replace in reverse order.

8b Electrode

- 8.6 Pull the ignition lead off the electrode and undo the retaining nut, see Diagram 14.

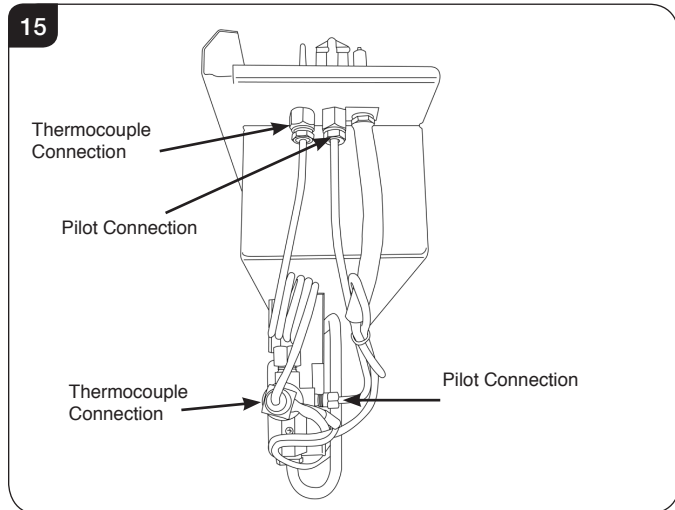


- 8.7 Replace with a new electrode. Do not over-tighten the nut; this could break the component.
- 8.8 Replace the ignition lead.

Servicing Instructions - Replacing Parts

8c Pilot Injector

- 8.9 Undo the pilot pipe from the gas valve and from the underside of the pilot burner, see Diagram 15.



- 8.10 Remove the pipe and the injector drops out from the burner.

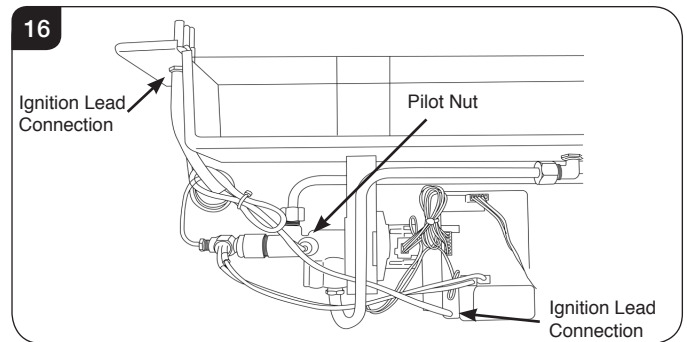
8d Thermocouple

- 8.11 Disconnect the thermocouple from the gas valve/interrupter, see Diagram 17.
- 8.12 Note the position of the interrupter leads. The lead with the red tag **MUST** be placed closest to the gas valve.
- 8.13 Undo the thermocouple nut in the back of the pilot bracket half a turn, see Diagram 15. This releases the thermocouple.
- 8.14 When replacing with a new thermocouple, take care to bend the new component to the same shape as the thermocouple just removed.
- 8.15 To refit the thermocouple into the pilot bracket, ensure it is pushed fully into the hole. There is a stop on the thermocouple to set the height.
- 8.16 Lock the retaining nut just enough to grip the thermocouple.
- 8.17 Connect the thermocouple to the valve/interrupter **taking care not to over-tighten.**

9. Ignition Lead

To replace the ignition lead:

- 9.1 Remove the Main Control Assembly, see Section 7.
- 9.2 Remove the ignition lead from the control box, see Diagram 16.

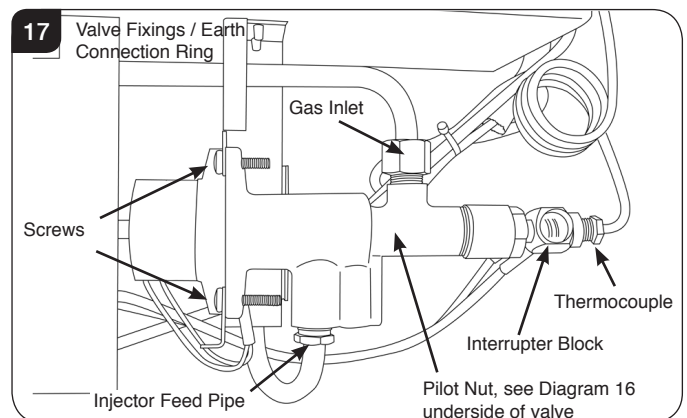


- 9.3 Remove the ignition lead from the electrode, see Diagram 16, remove cable ties where necessary.
- 9.4 **Note the direction of the lead. The new lead must follow exactly the same route. Replace cable ties where necessary.**

10. Gas Valve

To change the gas valve:

- 10.1 Remove the Main Control Assembly, see Section 7.
- 10.2 Release the gas inlet pipe, see Diagram 17.



- 10.3 Remove the thermocouple from the interrupter block, see Diagram 17.
- 10.4 Release the pilot pipe, see Diagram 17.
- 10.5 Release the injector feed pipe, see Diagram 17.

Servicing Instructions - Replacing Parts

- 10.6 Remove the Stepper motor harness from the control box, see Diagram 18.
- 10.7 Remove the two screws securing the valve to the support bracket, see Diagram 17 and withdraw the valve.
- 10.8 Replace in reverse order.
- 10.9 Ensure the interrupter leads are connected correctly with the red tag lead nearest to the gas valve body.

11. Magnetic Safety Valve

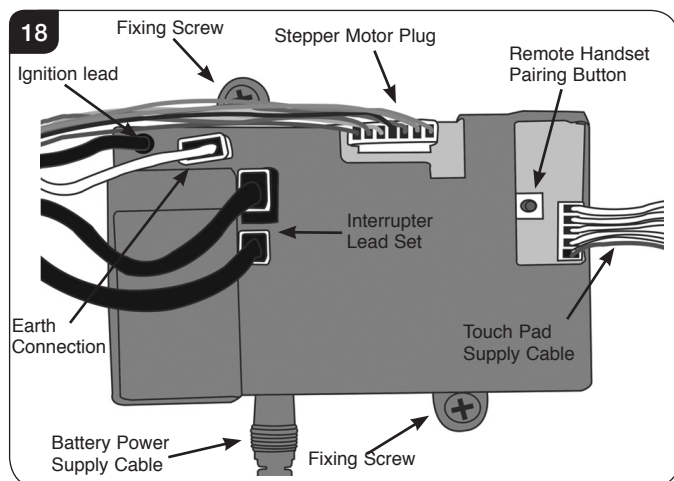
To replace the magnetic safety valve:

- 11.1 Remove the Main Control Assembly.
- 11.2 Undo the thermocouple from the interrupter block and remove the two interrupter leads.
- 11.3 Unscrew the interrupter block from the back of the valve.
- 11.4 Undo the silver magnetic valve retaining nut on the back of the valve.
- 11.5 Gently tap out the mag valve.
- 11.6 Replace with a new unit.
- 11.7 Reassemble in reverse order ensuring that the interrupter leads are connected correctly with the red tag lead nearest to the gas valve body.

12. Control Box

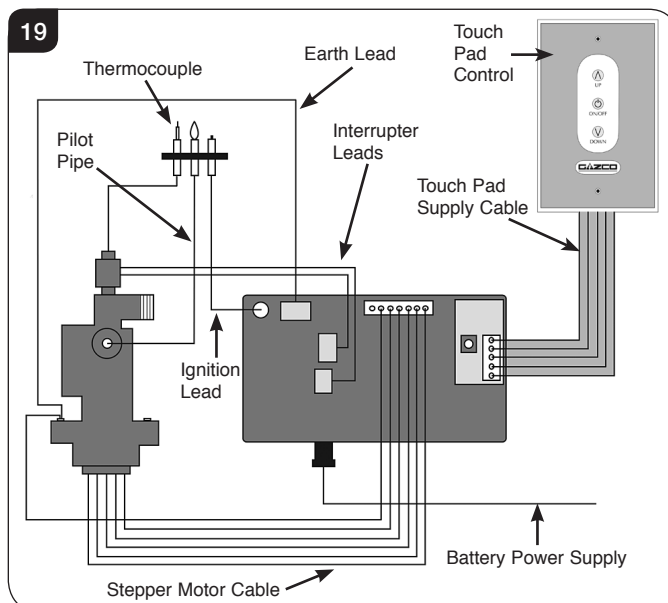
To disconnect from the control box:

- 12.1 Remove the Main Control Assembly.
- 12.2
 1. Ignition lead
 2. Interrupter leads
 3. Earth connection
 4. 7-way stepper motor plug, see Diagram 18.



The control box can now be replaced.

- 12.3 After replacing the control box ensure all connections are refitted as detailed in Diagram 19.

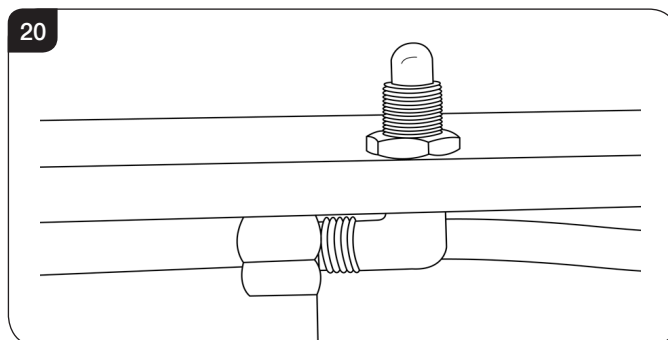


- 12.4 Prior to re-connection of the control box to the appliance, if there is no communication between the remote handset and the appliance, or if the handset is replaced, it will be necessary to pair the handset with the appliance, see Commissioning Section 2.
- 12.5 Ensure batteries are fitted and working in the handset.
- 12.6 Re-fit the touch pad control cable and the battery power supply cable to the control box.

13. Main Injector

To change the main injector:

- 13.1 Remove the Main Control Assembly.
- 13.2 Undo the injector feed pipe.
- 13.3 Undo the lock nut from the injector.

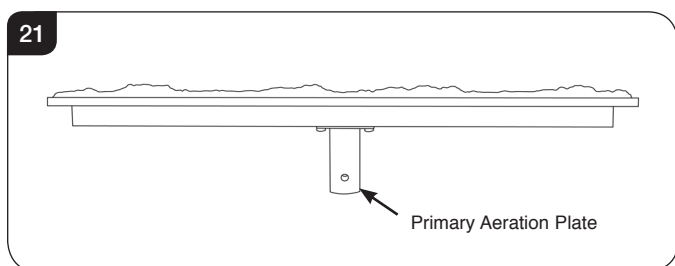


- 13.4 Replace with the correct size injector.

Servicing Instructions - Replacing Parts

14. Primary Aeration Plate

The Aeration Plate is attached to the main burner unit and can not be replaced individually, see Diagram 21



15. Changing Between Gas Types

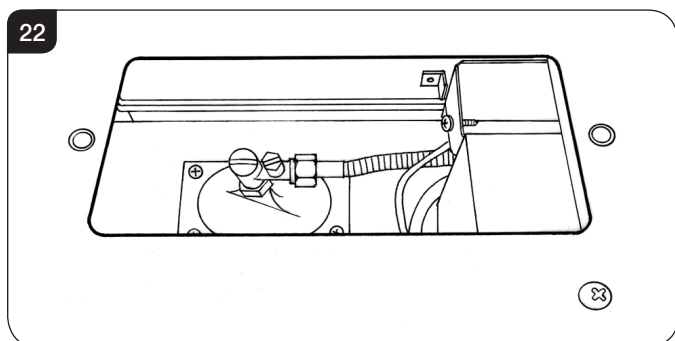
In order to change between gas types it will be necessary to change both the burner assembly and the complete control assembly.

Contact your Gazco retailer for further information.

A kit of parts is available for this. Always quote the Model number and Serial number when ordering any spare parts.

16. Pressure and leak testing the appliance

- 16.1 To gain access to the pressure test point, see Diagram 22 and follow Section 7, Main Control Assembly.



- 16.2 To leak test any gas joints on the appliance the control assembly must be undone and removed, see Section 7.5, Diagram 12.
- 16.3 Because there is now no burner fitted to perform a leak test, place a manometer tube over the injector tip.
- 16.4 Light the appliance and spray any joints with leak detector fluid.
- 16.5 Tighten joints or replace as required.
- 16.6 To check the inlet working pressure, replace the control assembly and connect a manometer to the pressure test point as depicted in Diagram 22.

- 16.7 Replace the burner and relight the appliance.

- 16.8 Operate the appliance at highest flame setting and check that the inlet pressure is in accordance with specifications detailed on pages 14.

Servicing Instructions - Replacing Parts

17. Short Spares List

COMPONENT	STUDIO SLIMLINE BF	
	NG	LPG
PILOT INJECTOR	PI0069	PI0070
MAIN INJECTOR	IN0053	IN0031
MAIN CONTROL ASSEMBLY	GZ9866N	GZ9866P
ELECTRODE	PI0075	
THERMOCOUPLE	PI0074	
MAG UNIT	GC0109	
IGNITION LEAD	GC0508	
GAS VALVE	GC0170	GC0172
CONTROL BOX	EL0575	
REMOTE CONTROL	EL0574	
INTERRUPTER BLOCK	GC0026	
INTERRUPTER LEADS	EL0316	
TOUCH PAD/WALL PLATE ASSEMBLY	EL0501	
TOUCH PAD LEAD	EL0502	
BATTERY HOLDER	EL0503	
BATTERY CABLE	EL0504	

LOG FUEL EFFECT PARTS		
BURNER ASSEMBLY	GZ9867	GZ10524
BURNER PLAQUE - NATURAL GAS - LEFT HAND	CE1192	
BURNER PLAQUE - NATURAL GAS - RIGHT HAND	CE1193	
BURNER PLAQUE - LPG - LEFT HAND	CE1194	
BURNER PLAQUE - LPG RIGHT HAND	CE1195	
LOGSET	CE1187	
EMBAGLOW	GZ8471	

STONE CHIPPINGS/ GLASS BEAD FUEL EFFECT PARTS		
BURNER ASSEMBLY	GZ10550	GZ10551
STONE CHIPPINGS	CE1094	
CLEAR GLASS BEADS	923-774	
BLACK GLASS BEADS	923-788	
RED GLASS BEADS	923-792	

LINERS	
VERMICULITE LINERS	923-733
BLACK REEDED LINER SET	923-826
BRICK LINER SET	923-765

Service Records

1ST SERVICE

Date of Service:.....

Next Service Due:.....

Signed:.....

Retailer's Stamp/Gas Safe Registration Number

3RD SERVICE

Date of Service:.....

Next Service Due:.....

Signed:.....

Retailer's Stamp/Gas Safe Registration Number

5TH SERVICE

Date of Service:.....

Next Service Due:.....

Signed:.....

Retailer's Stamp/Gas Safe Registration Number

7TH SERVICE

Date of Service:.....

Next Service Due:.....

Signed:.....

Retailer's Stamp/Gas Safe Registration Number

9TH SERVICE

Date of Service:.....

Next Service Due:.....

Signed:.....

Retailer's Stamp/Gas Safe Registration Number

2ND SERVICE

Date of Service:.....

Next Service Due:.....

Signed:.....

Retailer's Stamp/Gas Safe Registration Number

4TH SERVICE

Date of Service:.....

Next Service Due:.....

Signed:.....

Retailer's Stamp/Gas Safe Registration Number

6TH SERVICE

Date of Service:.....

Next Service Due:.....

Signed:.....

Retailer's Stamp/Gas Safe Registration Number

8TH SERVICE

Date of Service:.....

Next Service Due:.....

Signed:.....

Retailer's Stamp/Gas Safe Registration Number

10TH SERVICE

Date of Service:.....

Next Service Due:.....

Signed:.....

Retailer's Stamp/Gas Safe Registration Number

Gazco Limited, Osprey Road, Sowton Industrial Estate, Exeter, Devon, England EX2 7JG
Technical Customer Services: (01392) 261950 Fax: (01392) 261951
E-mail: technicalservices@gazco.com

A member of the Stovax Group

E & O E